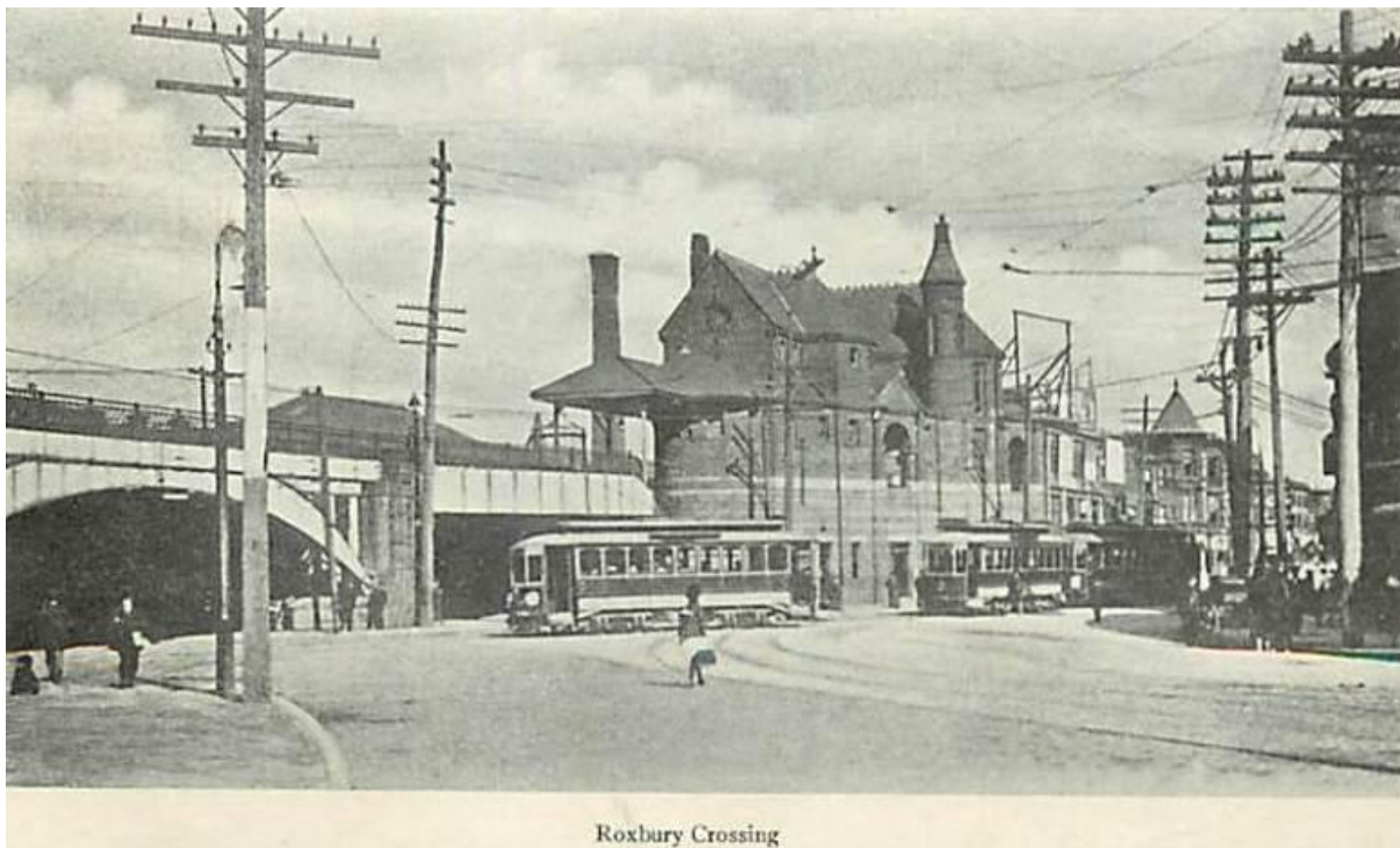


Roxbury Crossing Railroad Station Fire, May 14, 1950.  
Fire in the 1888, 4-story brick, New Haven RR building, with Café on first floor, 2 Alarms, Box 2245, 1530 Hours.  
Fire photos, courtesy Bruce Cook







Roxbury Crossing

From a 1915 Postcard

Courtesy: David J Russo

<http://www.davidjrusso.com/architecture/brigham/buildings>