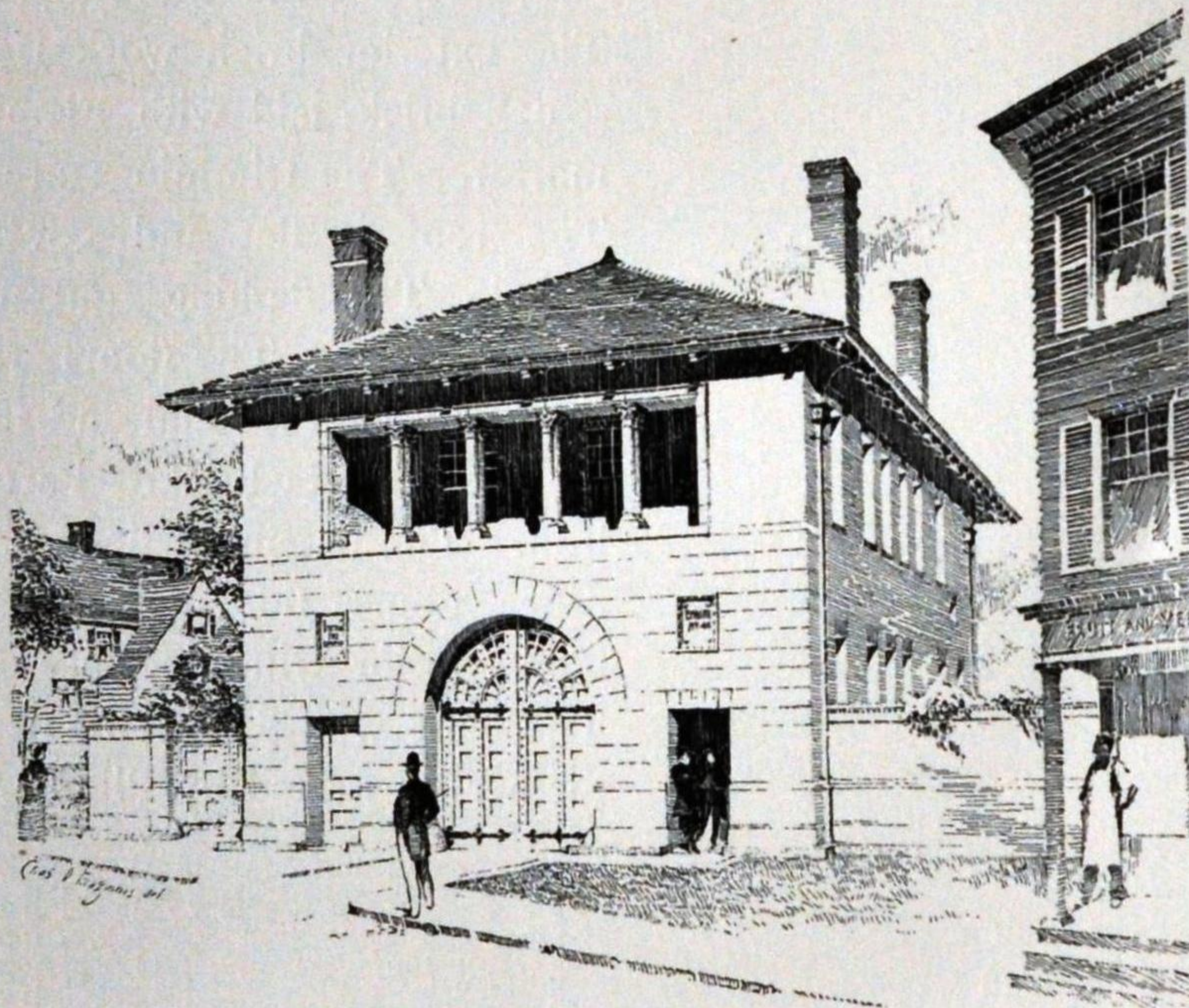


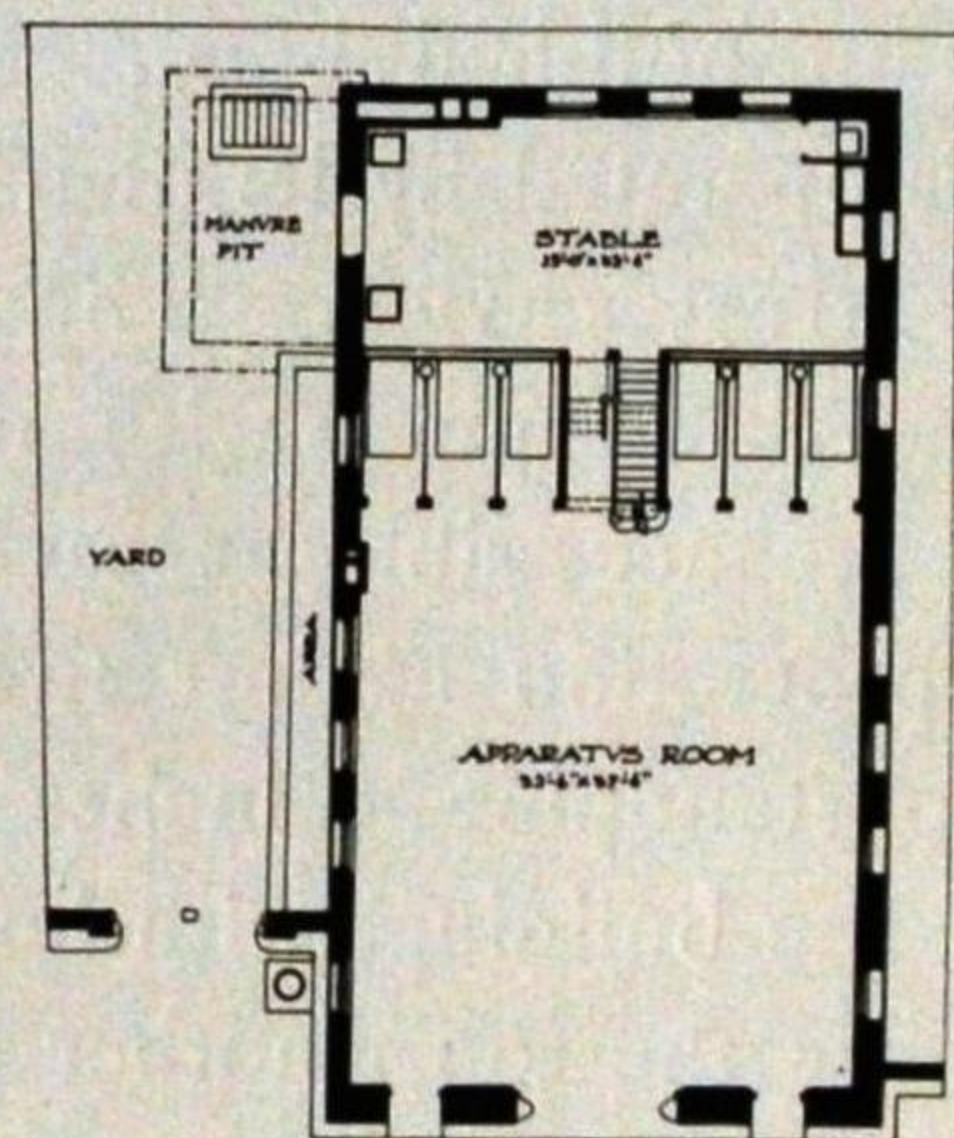
ASHMONT ENGINE HOUSE is on Dorchester avenue, Ward 24 (Dorchester). It is a single company house. On the first floor is the apparatus room, at the end of which is a six stall stable fitted with Lynn stall floors. The walls of apparatus room and stable are lined with Scotch firebrick. On the second floor are the captain's room, dormitory, locker room,

Ashmont Engine House.

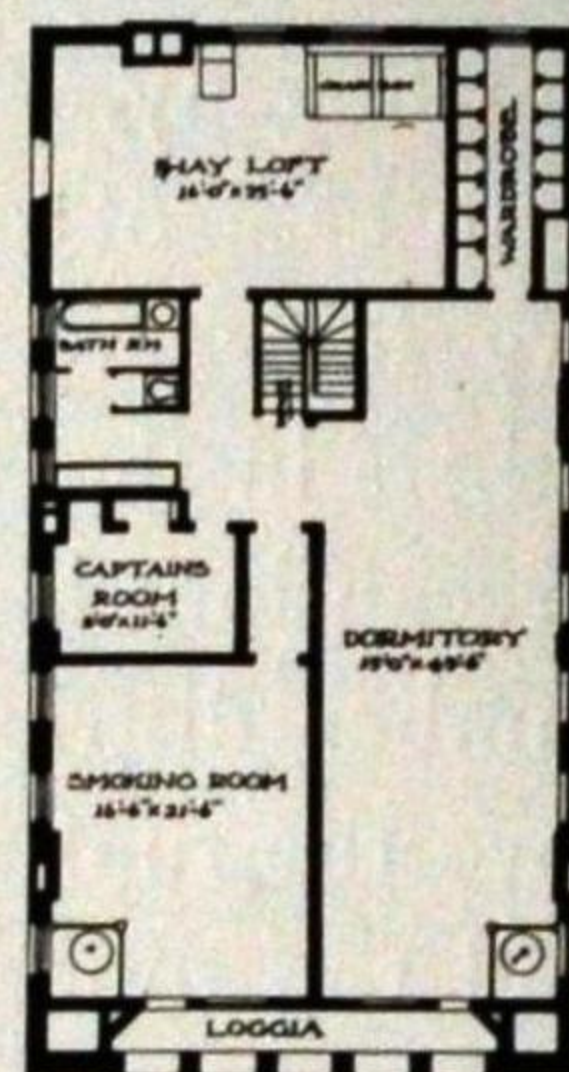


ASHMONT ENGINE HOUSE.

toilet room, bath room, smoking room, and hay loft. In the basement are toilet room, fuel room, washing troughs, and drying racks for hose. The basement floor is of asphalt. All other floors are of mill construction, with upper floors of Georgia pine. The partitions of the second story are of terra cotta lumber. The door and window trimmings are of Keene's cement. The exterior brick work is of Cartraig Scotch firebrick, laid Flemish bond in white mortar, with Amherst stone trimmings. The roof has projecting eaves with cut rafter ends of Georgia pine, and is covered with light green Vermont slate. Heating is by indirect radiation, with proper provision for ventilation. The building cost \$21,413.41. It is further illustrated by Plates LXXII. and LXXIII.



FIRST FLOOR PLAN.



SECOND FLOOR PLAN.