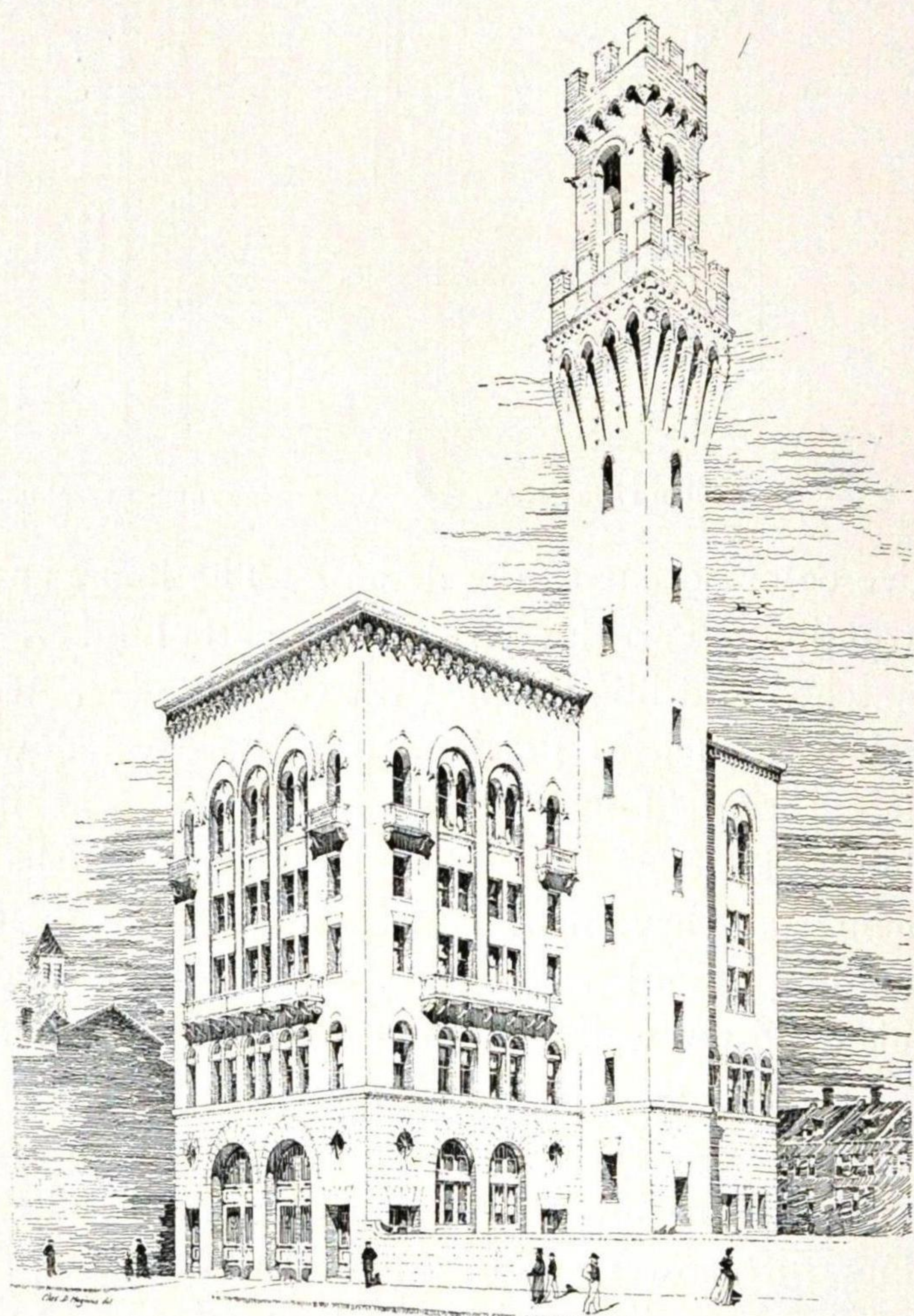


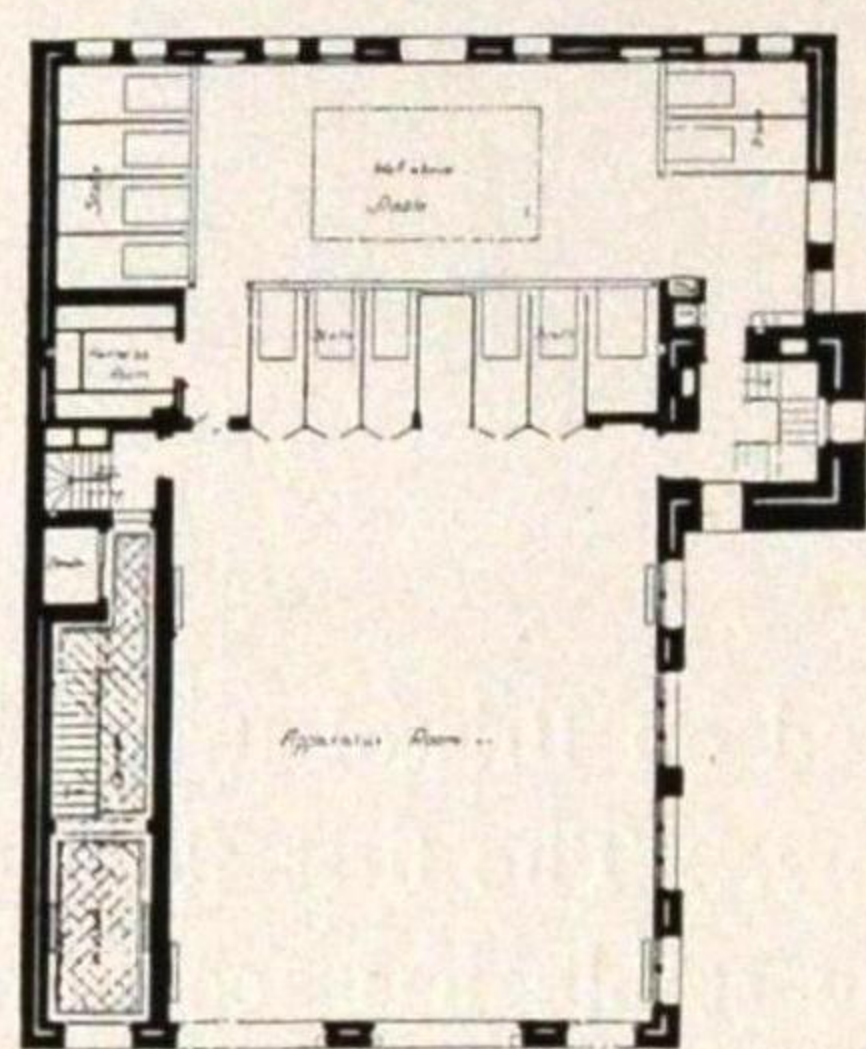
THE FIRE DEPARTMENT HEADQUARTERS is situated on Bristol street, Ward 9. The building has four full stories, with two mezzanine floors. The first floor contains the apparatus room, the stable, and the harness room. The stable has accommodation for thirteen horses. Five of these stalls are used for horses in active service, and are connected with the apparatus room in front by spring doors worked by electric trip wires. The upper part of the stable is on the mezzanine floor, the main part of the first story being 18 feet 6 inches high. The stall posts run to girders in the ceiling, and serve for supports for that portion of the mezzanine floor. There is a glazed partition between the apparatus room and the stable. Above the stalls are balconies overlooking the large room below. On the mezzanine floor on one side is a hay loft, and on the other side is a dormitory with bath room, etc. The main entrance to the upper stories is at the left of the apparatus room, and gives into the main staircase hall. At the rear of the hall is the elevator well. On the second floor are the offices of the department. These include the large clerks' room, the Chief's office, and the Fire Commissioners' rooms. To the right of the clerks' room are a small room for reports, the wardrobes, lavatories, and water closets. The third floor contains the gymnasium, with shower baths, etc., and instructor's office. Raised 6½ feet above the floor of the gymnasium is a running track, opening from which are storage rooms. On this mezzanine floor is the room for the inspector of wires. A dormitory for the fire-alarm clerks is entered from the tower. The fourth floor contains the fire-alarm signal station for the entire city. Connecting with the main room at the front is the superintendent's office. In the rear are the dynamo room, where are located electric generators, and rooms for the inspector of wires.



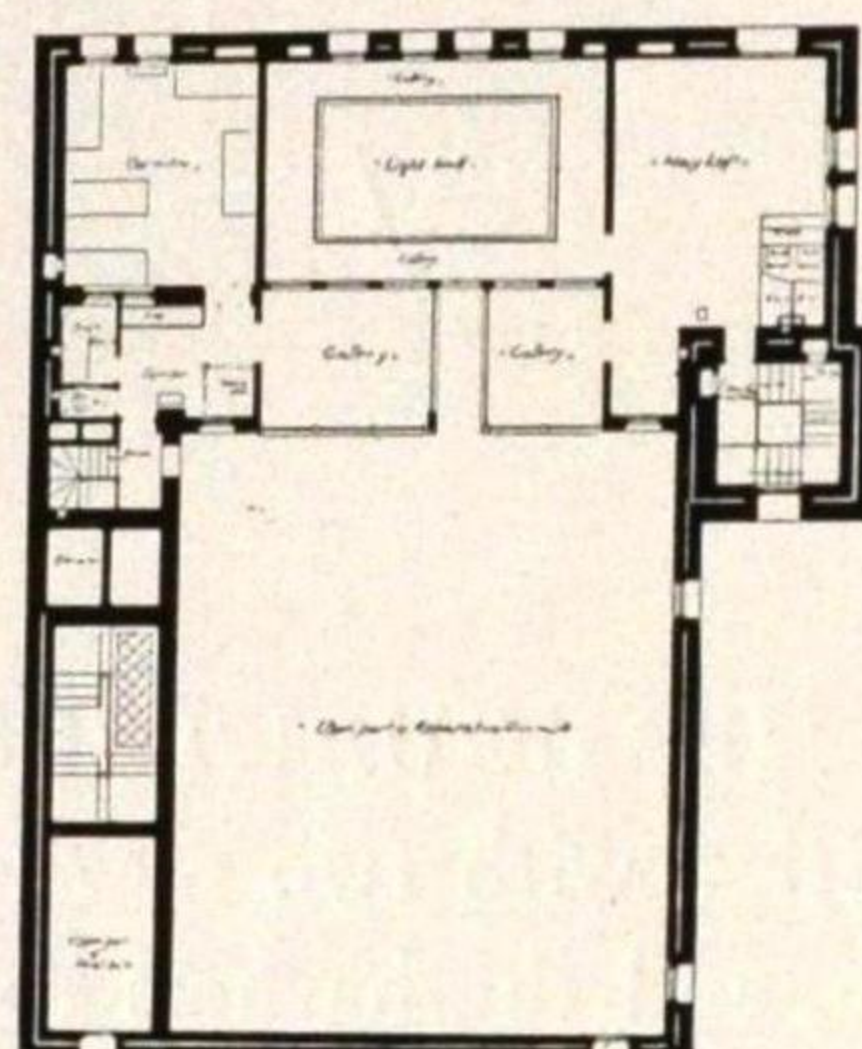
FIRE DEPARTMENT HEADQUARTERS.

Main features of construction.

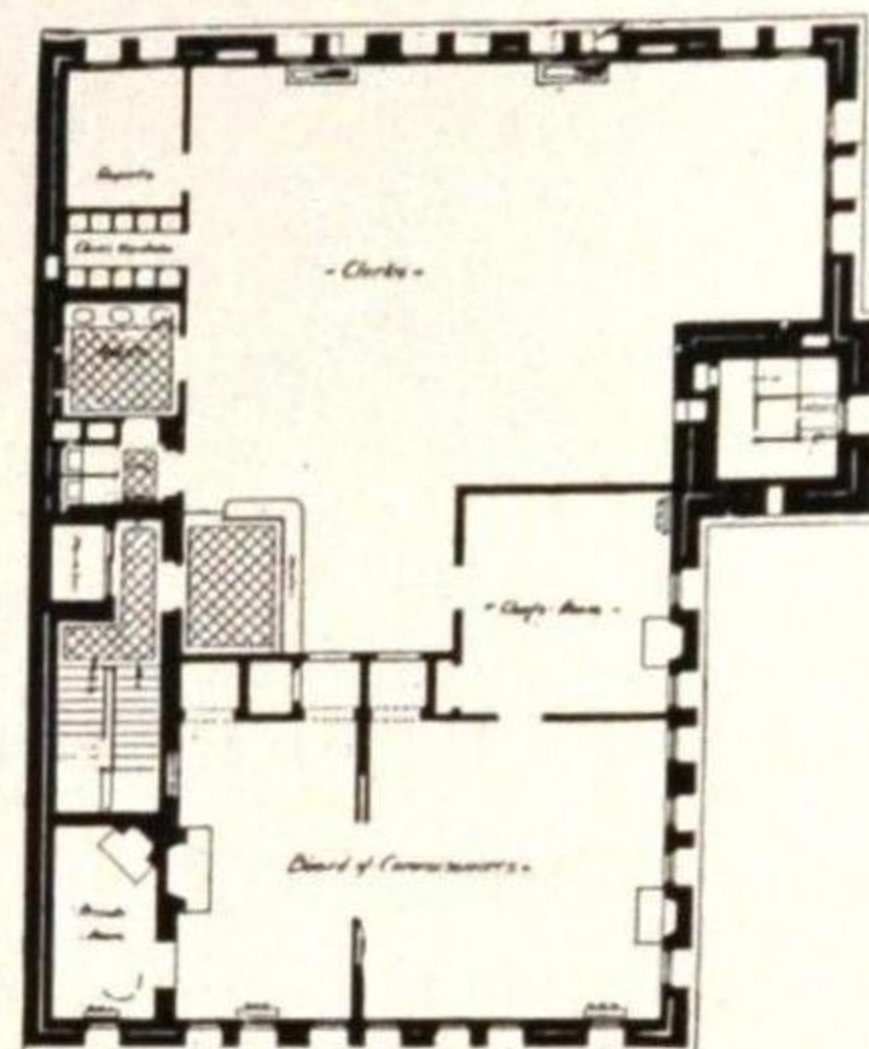
The building is on piles with block granite foundations. The concrete of the basement floor is 12 inches thick, and is finished with 1 inch of asphalt carried up 2 feet on the walls back of the 4 inch brick lining. The exterior is faced with buff New Jersey terra cotta brick, laid Flemish bond in lime mortar. The trimmings are of buff terra cotta and Amherst stone. Marble shields and panels of Bois d'Orient, Brescia, and Red of Levanto marble are used to



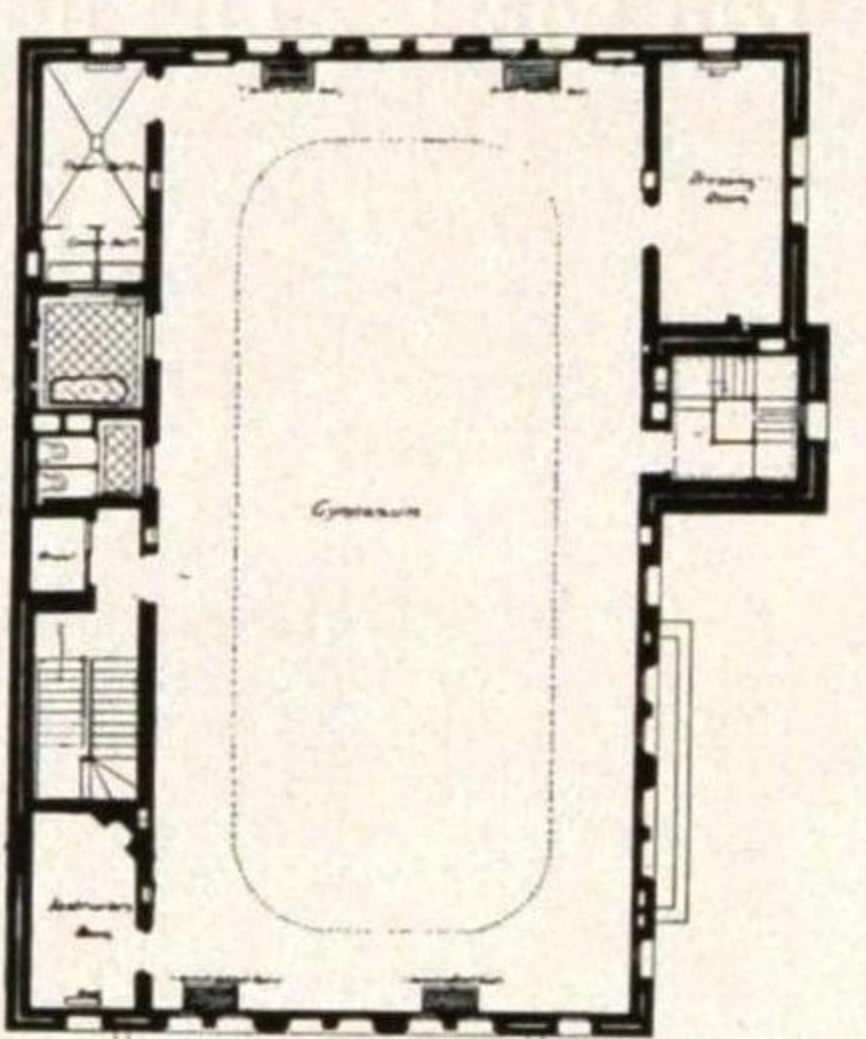
FIRST FLOOR PLAN.



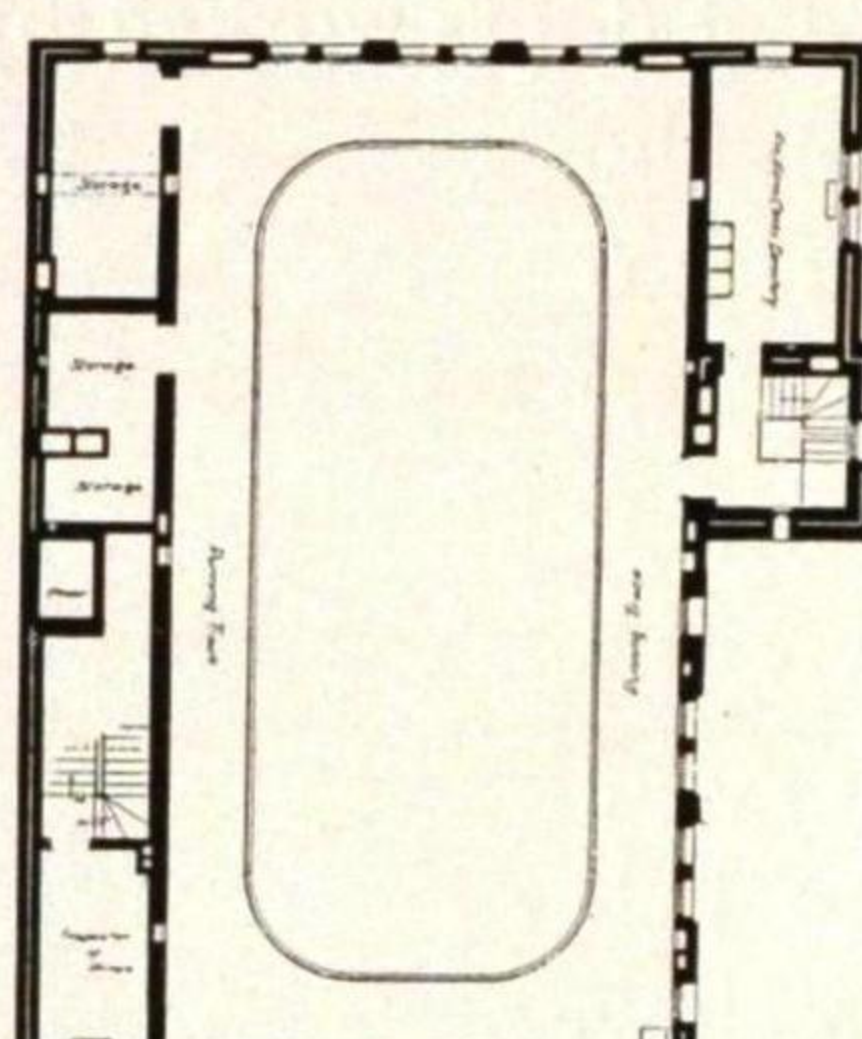
FIRST MEZZANINE FLOOR PLAN.



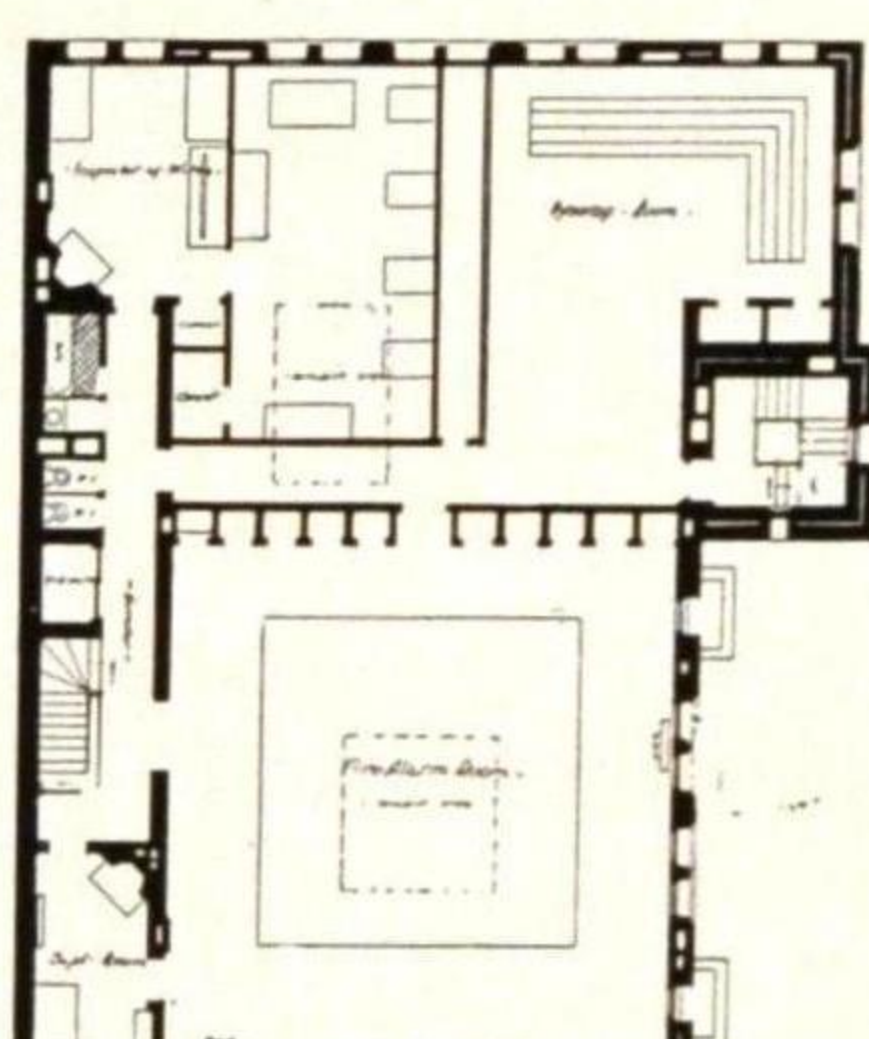
SECOND FLOOR PLAN.



THIRD FLOOR PLAN.



THIRD MEZZANINE FLOOR PLAN.



FOURTH FLOOR PLAN.

give color accent to the design. The floors and the roof are of steel and terra cotta arch construction. Partitions are of terra cotta lumber. Under floors are of spruce, upper floors are of matched and blind nailed rift Georgia pine. On the terra cotta arch construction of the roof is laid 1 inch of Portland cement, covered with five-ply tarred paper. On top of this are slate tiles, laid in waterproof cement. The flashings and the skylights are of copper. The staircases are of iron throughout, with paneled iron risers and scored treads, except that the main stairs have marble risers and marble treads. The main stairway hall to the top of the building has a base of Knoxville marble and a dado 5 feet high of white enameled tile. Above this dado the walls are lined with buff terra cotta brick.

All bath rooms and lavatories have marble bases and walls lined to the ceiling with enameled brick. Floors, bases, and sills in water closets, toilet rooms, corridors, etc., are of Knoxville marble. All rooms of the second story have marble plinths, bases, and sills. The floors of shower and sponge bath rooms on the third floor are of asphalt. The stall posts run to the ceiling and are of iron 5 inches in diameter, bolted to 12 inch channel beams sunk in the concrete floor. Interior wood finish is kiln-dried brown ash. Where the walls are lined with brick, the windows have fine-axed bluestone sills. The apparatus room is lined with buff terra cotta brick; the walls of stable, tower, gymnasium, rear stairs, dynamo room, and hay lofts are lined with selected water struck brick. The front entrance doors are oak with glass panels protected by wrought-iron guards. The running track in the gymnasium is hung from the ceiling by iron rods. In the gymnasium shower room are four shower baths. The sponge baths have each a soapstone foot bath. The building is heated by steam with

direct and direct-indirect radiators. The steam for this purpose is carried from the powerhouse about 200 feet distant through pipes laid in a brick conduit. The stable and the rooms on each floor are ventilated by an electric exhaust fan. In the fourth story the space for the fire-alarm apparatus is enclosed by a railing and gate of polished brass. Switchboards and cases are built of white mahogany. While the system is operated by its own electrical power, connection can be made in case of emergency with the street service. The conduits for the wires in the fourth story floor are formed by 3 inch Akron pipe, with manholes. These conduits connect with others in the tower walls, which are accessible at each floor by means of iron doors. Extra precautions have been taken for protection against fire, as the building stands in a dangerous lumber district. A wrought-iron standpipe 5 inches in diameter runs from the ground to above the roof on the east side of the building, with hose connections at each of the balconies and the roof. From this pipe near the top, another pipe of from 4 to 2½ inches in diameter runs about the side and the front of the building. On the middle of each side is a revolving sprinkler, and on the front there are three sprinklers, the arms being of bronze metal and slightly curved. The cost of this building, exclusive of fire alarm apparatus, was about \$90,000.00. The cost of the cabinet work for the fire alarm apparatus was \$3,500.00. This building is further illustrated by Plates LXXV. to LXXVIII.

Finish and fixtures.