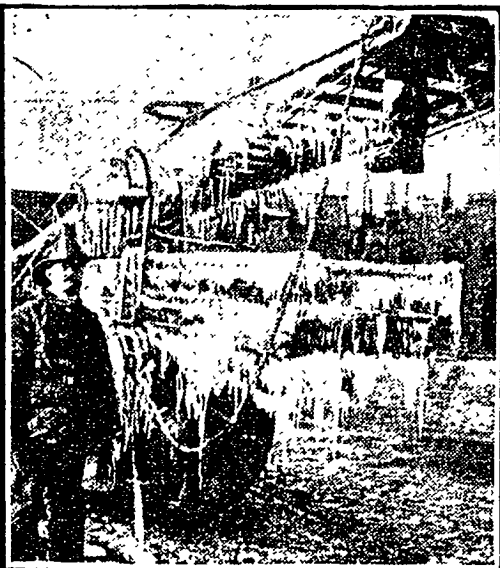
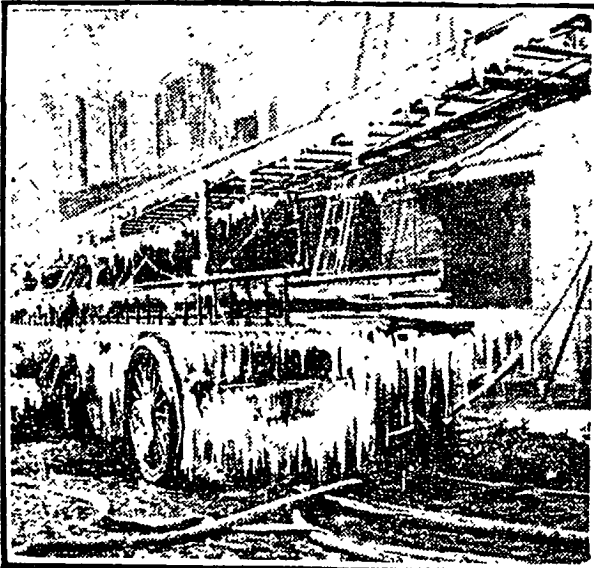


# SOUTH BOSTON HAS \$150,000 FIRE.

## Storage Warehouses on Commonwealth Lands the Scene---Employes Get Safely Out.



The worst fire of the new year in this city occurred yesterday forenoon in the group of extensive storage warehouses on the commonwealth lands at South Boston, and entailed a loss estimated at \$150,000. It threatened the entire district and called out four alarms.

Five floors filled with burning cotton and wool waste made a smudge that enveloped the entire surroundings in dense darkness, while the low temperature that prevailed made the water freeze almost as soon as it struck the building.

The fire was confined to the easterly half of building No. 3, the center of the group of five six-story buildings, fronting on Wormwood st. A thick party-wall divided the building, and prevented the flames from working their way through to the other part, which fronts on Binford st.

The building is owned by the Factory buildings trust, of which C. E. Colting is trustee, and was built about 10 years ago. It was valued at \$44,000.

### Everybody Got Out Safely.

On the Wormwood-st side the occupants were the Proctor-Ellison company, leather dealers, who occupied the first floor, clear through to Binford st; the rest of the building on the Wormwood-st side was occupied by Joseph Josephs & Bros company, dealers in iron and metals, and who are also proprietors of the Railway supply and manufacturing company, dealers in wool and cotton waste.

On the other end of the building, the second floor was vacant, the third, fourth and sixth floors were occupied by the Hallet & Davis piano company, and the fifth floor by the New England manufacturing company. All the tenants on the Binford-st side of the building suffered heavily from smoke and water.

The fire started on the third floor, in the quarters occupied by the Railway supply and manufacturing company. In the room were 15 girls and women and nearly as many men and boys. All managed to get out of the building in safety, despite the rapid spread of the flames in the cotton and wool waste.

The first alarm was given by the automatic at 9:10, and in the next 20 minutes four alarms were sent out from box 162. Owing to the condition of the streets, which were covered with slippery snow, and the long distance from the fire houses, the apparatus had a hard time getting to the scene of the fire. One of the horses attached to engine 9 ran against a post at the corner of High st and Atlantic av and broke an ankle. His condition was such that the fire commissioner ordered him to be shot. His name was Nigger, and he was one of the most intelligent and valuable animals in the department.

The fireboat was able to get close to the scene of the fire and the powerful streams from her engines were sent through the water tower, which did effective work in drenching the blazing waste.

On the Binford-st side of the building there was an unusually large number of breaks in the hose and couplings, and not only were spectators and firemen thoroughly drenched, but much damage to the goods in the Binford-st end of the buildings came from this cause.



SCENES AT THE SOUTH BOSTON FIRE.

The fire burned fiercely for about an hour and a half, and then was gotten under control.

### Heaviest Loser.

The greatest loss was sustained by the Railway supply and manufacturing company. Its stock will be a total loss. It was insured for \$73,000.

The Proctor-Ellison company carried insurance of \$41,000, but its loss is not expected to be more than half of that amount.

The Hallet & Davis piano company had a large stock on hand, including pianos in every stage of construction, from the load of lumber put in the day before to the few finished pianos that were ready for shipment to the sales-rooms and to customers. One of the company officials estimated the value of the stock at \$109,000, but there was only \$17,000 of insurance carried. The company's loss will be wholly from smoke and water, and is estimated to be nearly double that of the insurance.

The New England blacking company suffered a slight loss from water. It carried an insurance of \$10,000.

The building was insured for \$38,600, but the damage is estimated to be about \$25,000.

The losses are estimated as follows: Railway Supply & Manufacturing company \$73,000, Proctor-Ellison company \$41,000, Hallet & Davis piano company \$109,000, New England blacking company \$10,000, Factory Buildings trust \$38,600; total \$150,000.

Two firemen were slightly injured. Ladderman Norman R. Doyle of ladder 19 was struck on the head by falling debris while mounting a ladder, and was cut on the ear. Lieut Mulligan of engine 15 was cut on the hand by falling glass. Both men were treated at the emergency wagon and remained at work. Rev Fr Harkins, one of the newly-appointed chaplains, was on duty and helped attend the injured men.