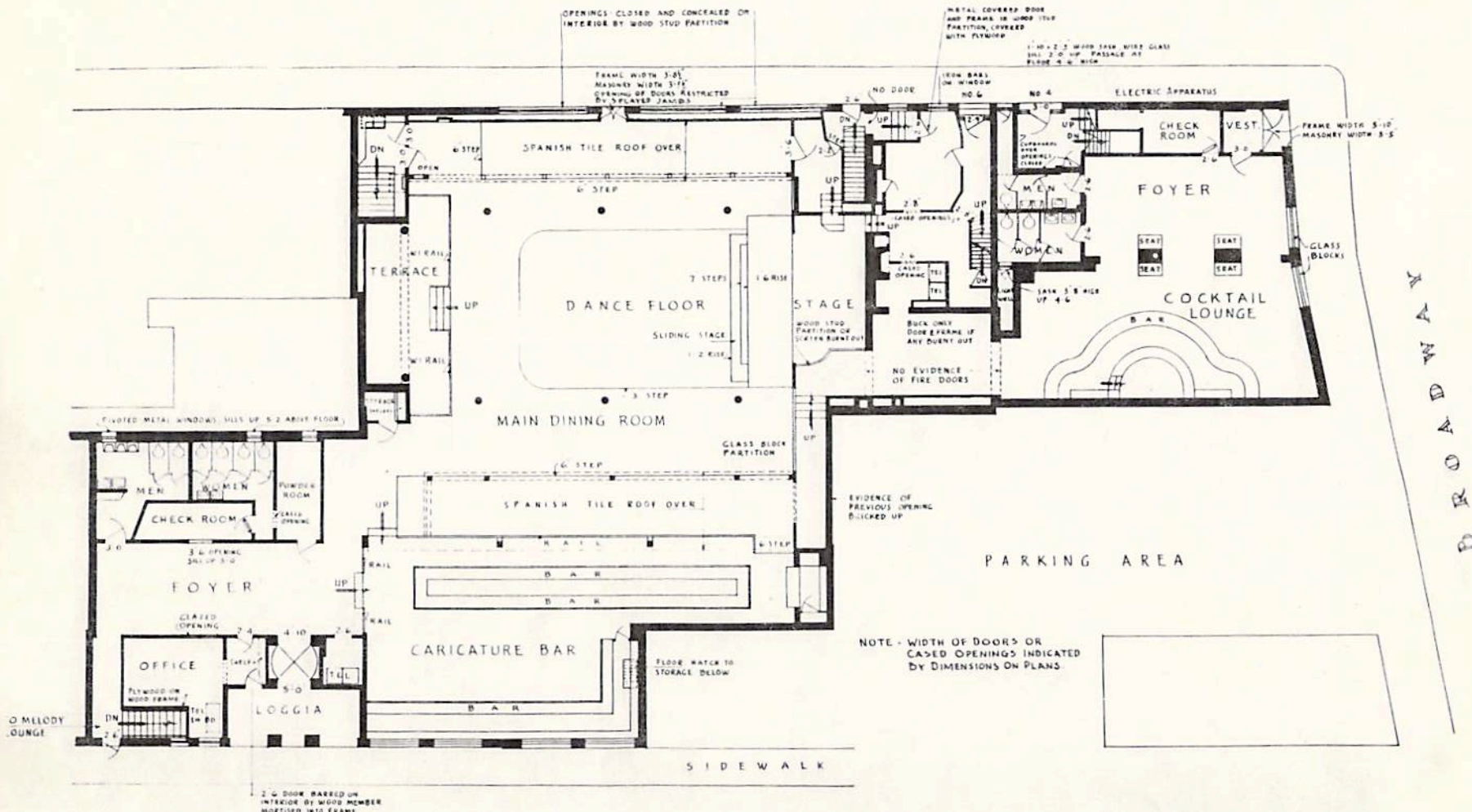
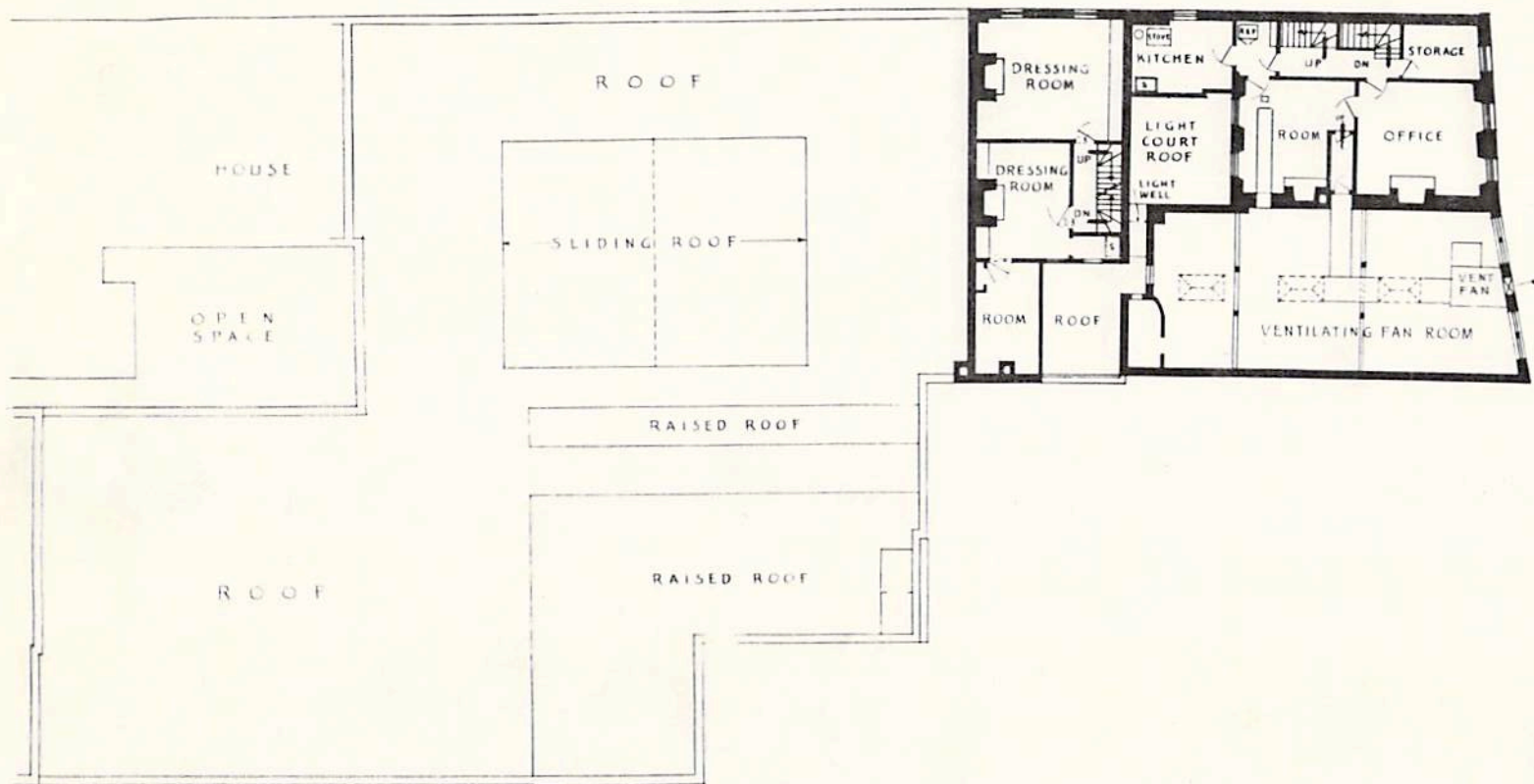


SHAWMUT STREET



PIEDMONT STREET

- FIRST FLOOR PLAN -
 SCALE 1/8" = 1'-0"
 - COCOONUT GROVE -
 - BOSTON, MASS. -
 - MEASURED & DRAWN DECEMBER 6-14, 1942 -
 - AFTER FIRE OF NOVEMBER 28, 1942 -
 - by -
 - STEVENS, CURTIN, MASON & RILEY, ARCHITECTS -
 - BOSTON -



- SECOND FLOOR PLAN -
 - SCALE 1/4" = 1'-0" -
 - COCOANUT GROVE -
 - BOSTON, MASS. -
 - MEASURED & DRAWN DECEMBER 6, 1942 -
 - AFTER FIRE OF NOVEMBER 28, 1942 -
 - BY -
 - STEVENS CURTIN MASON & RILEY, ARCHITECTS -
 - BOSTON -