

FIRE DEPARTMENT

AND ELECTRICAL INSPECTION DIVISION



CITY OF BOSTON



ANNUAL REPORT 1949

ANNUAL REPORT
OF THE
FIRE DEPARTMENT
AND ELECTRICAL
INSPECTION DIVISION
OF THE
CITY OF BOSTON
FOR THE
YEAR ENDING DECEMBER 31, 1949



CITY OF BOSTON
PRINTING DEPARTMENT
1950



ANNUAL REPORT

OF THE

FIRE DEPARTMENT

FOR THE YEAR 1949.

Boston, January 3, 1950.

HON. JOHN B. HYNES,
Mayor of Boston.

DEAR SIR:

I have the honor to submit herewith a report of the activities of the Boston Fire Department and the Electrical Inspection Division for the year ending December 31, 1949.

During the period covered by this document MR. RUSSELL S. CODMAN, JR., was Fire Commissioner.

Respectfully submitted,

MICHAEL T. KELLEHER,
Fire Commissioner.

HISTORY.

FIRE COMMISSIONERS.

*1874-1876. Alfred P. Rockwell.
1877-1879. David Chamberlain.
1879-1883. John E. Fitzgerald.
1883-1885. Henry W. Longley.
1885-1886. John E. Fitzgerald.
1886-1895. Robert G. Fitch.
1895-1905. Henry S. Russell.
1905. Patrick J. Kennedy.
(Acting February 17—March 20.)
1905-1908. Benjamin W. Wells.
1908-1910. Samuel D. Parker.
1910. Francis M. Carroll.
(Acting May 27—September 16.)
1910-1912. Charles C. Daly.
1912-1914. Charles H. Cole.
1914-1919. John Grady.
1919-1921. John R. Murphy.
1921-1922. Joseph P. Manning.
(Acting Nov. 8, 1921—April 1, 1922.)
1922. William J. Casey.
(Acting April 1—August 24.)
1922-1925. Theodore A. Glynn.
1926. Thomas A. Sullivan.
(Acting January 26—July 6.)
1926-1930. Eugene C. Hultman.
1930-1933. Edward F. McLaughlin.
1933. Eugene M. McSweeney.
(October 16, 1933—January 5, 1934.)
1934-1938. Edward F. McLaughlin.
1938-1945. William Arthur Reilly.
1945-1946. John I. Fitzgerald.
(June 7, 1945—January 7, 1946.)
1946- Russell S. Codman, Jr.

CHIEFS OF DEPARTMENT.

1826-1828. Samuel D. Harris.
1829-1835. Thomas C. Amory.
1836-1853. William Barnicoat.
1854-1855. Elisha Smith, Jr.
1856-1865. George W. Bird.
1866-1874. John S. Damrell.
1874-1884. William A. Green.
1884-1901. Louis P. Webber.
1901-1906. William T. Cheswell.
1906-1914. John A. Mullen.
1914. John Grady. (1 day.)
1914-1919. Peter F. McDonough.
1919-1922. Peter E. Walsh.
1922-1924. John O. Taber.
1925-1930. Daniel F. Sennott.
1930-1936. Henry A. Fox.
1936-1946. Samuel J. Pope.
1946-1948. Napeen Boutillier.
1948- John F. McDonough.

* Previous to 1874, the Boston Fire Department was in charge of the Chief Engineer.

SECTION 1—THE FIRE DEPARTMENT.

SPECIAL COMMENTS.

A. PERSONNEL.

The following changes in personnel of the fire force occurred during the year: twenty-three (23) retirements, thirteen (13) deaths, and five (5) resignations. The promotions were ten (10) deputy chiefs, ten (10) district chiefs, twenty (20) captains, and forty-nine (49) lieutenants. One hundred and thirty-eight (138) new men were appointed, and four (4) privates were reinstated.

B. APPARATUS AND MOTOR VEHICLES.

The following major apparatus was purchased and delivered during the year:

- 4 85-foot Aerial Ladder Trucks (Ladder 5, 7, 13, 26)
- 6 65-foot Junior Aerial Ladder Trucks (Ladder 16, 21, 27, 28, 29, 31)
- 2 Hose Wagons
- 4 Tractors (Ladder 3, 4, 8. One tractor assigned to Ladder 1 is not in service yet.)
- 2 Packard Automobiles (Chief of Department and Fire Prevention Division)
- 16 Ford Automobiles (Commissioner, Assistant Superintendent of Fire Alarm Division and fourteen districts)
- 6 Ford Pickup Trucks (Maintenance Division)

In addition the following apparatus was contracted for during the year:

- 1 65-foot Junior Aerial Ladder Truck
- 3 85-foot Aerial Ladder Trucks
- 3 Cardox Wagons (high pressure fog nozzle)

C. BUILDING PROGRAM.

The new fire station for Engine 10, Mt. Vernon and River streets, Back Bay, was completed on June 1, 1949.

The new fire station for Engine 55, Washington street and Ferncliff avenue, West Roxbury, was completed on July 11, 1949.

A contract was awarded on November 22, 1949, in the amount of \$126,790, for the construction of a fire

station at Blackinton and Ashley streets, East Boston, where it is proposed to place in service a new engine company, No. 56, when the building is ready for occupancy.

A contract was awarded on December 30, 1949, in the amount of \$1,684,932, for the construction of a Fire Department Headquarters and Maintenance Garage Building, on Southampton street. This building, when completed, will also house the Fire Alarm Division Repair Shop and Engine 23 and Water Tower 2.

On January 25, 1949, the old fire station at 133 Salem street, formerly occupied by Engine 8, was abandoned and turned over to the Public Buildings Department.

On August 30, 1949, Engine 44 (fireboat company) house and dock at 18 Northern avenue, was abandoned by the Fire Department and turned over to the Public Buildings Department. The personnel of fireboat, Engine 44, are now housed at 531 Commercial street in quarters formerly occupied by fireboat, Engine 31.

PERSONNEL.

**EXECUTIVE ORGANIZATION.
BOSTON FIRE DEPARTMENT.
1949.**

Fire Commissioner, RUSSELL S. CODMAN, JR.

Executive Secretary, WILLIAM D. SLATTERY.

Medical Examiner, MARTIN H. SPELLMAN, M.D.

Chief of Department, JOHN F. McDONOUGH.

Superintendent of Maintenance Division, WALTER C. GLYNN.

Superintendent of Fire Alarm Division, ALBERT L. O'BANION.

Deputy Chief in Charge of Fire Prevention Division, EDWARD N. MONTGOMERY.

Superintendent, Electrical Inspection Division, BERNARD B. WHELAN.

Awarded "*John E. Fitzgerald Medal*" during 1949.

Ladderman WILLIAM W. AUSTIN, Ladder Company 26.

Awarded "*Walter Scott Medal for Valor*" during 1949.

Hoseman EDWARD A. CODAIR, Engine Company 22.

**IN MEMORIAM.
Deaths of Active Members During 1949.**

DATE.	NAME.	RANK.	COMPANY.
February 16.....	William J. Tierney.....	Hoseman.....	Engine Company 9.
February 26.....	Charles W. Nicholson....	Supervisor of Building Re- pairs.....	Maintenance Division.
June 2.....	Philip S. Bates.....	Captain.....	Engine Company 18.
June 17.....	Frank J. Langone.....	Auto Mechanic.	Maintenance Division.
July 5.....	William F. Ryan.....	Lieutenant.....	Ladder Company 28.
July 24.....	Joseph W. Thompson....	Engineer.....	High Pressure Service.
August 30.....	James F. Hoban.....	Engineer.....	High Pressure Service.
September 7.....	Herbert C. Collins.....	Captain.....	Engine Company 16.
September 15.....	Peter V. Costello.....	Hoseman.....	Engine Company 44.
October 18.....	Timothy J. Quinlan.....	Hoseman.....	Engine Company 41.
October 23.....	John T. Mullins.....	Apparatus Oper- ator.....	Engine Company 23.
October 25.....	Daniel J. Crowley.....	District Chief..	District 5.
November 6.....	Frank D. McMackin.....	Captain.....	Engine Company 27.
November 8.....	John E. McFarland.....	Engineer.....	High Pressure Service.
November 8.....	Edward F. McCarthy....	District Chief..	District 13.

COMPARATIVE FIGURES — MAN POWER.
(Actually on Rolls.)

YEAR.	Total Fire Fighting Force.*	Total Number of Privates.†	Total Number of Apparatus Operators.	Total Number of Lieutenants.	Total Number of Captains.	Total Number of District Chiefs.
1945.....	1,346	1,021	44	124	95	30
1946.....	1,373	1,062	37	124	89	31
1947.....	2,014	1,530	31	189	90	51
1948.....	2,165	1,594	25	221	88	49
1949.....	2,156	1,629	23	246	95	49

* Includes Chief of Department, Aides to Commissioner and Chief of Department, Deputy Chiefs, Masters and Engineers on fireboats, High Pressure Service, Motor Squad, etc.
† As of December 31.

USE OF APPARATUS.
Summary — Service Reports, 1949, Engine Companies.

UNIT.	Alarms Attended.	Working Fires.	Hose Used, Feet.	Hours Work.	Pump Hours.
Engine 1.....	578	164	47,950	48.51	15.42
Engine 2.....	374	213	51,900	96.05	32.07
Engine 3.....	885	414	109,300	175.44	27.42
Engine 4.....	701	219	62,400	111.12	12.44
Engine 5.....	425	180	47,550	80.09	7.35
Engine 6.....	413	110	12,900	51.21	2.23
Engine 7.....	391	216	47,150	102.00	16.00
Engine 8.....	394	247	48,450	128.13	41.37
Engine 9.....	401	175	58,200	66.23	9.14
Engine 10.....	521	121	30,700	84.05	14.52
Engine 11.....	304	200	57,840	72.12	26.16
Engine 12.....	987	388	96,900	163.00	73.00
Engine 13.....	1,110	502	122,950	210.19	50.10
Engine 14.....	1,371	543	132,600	202.25	40.68
Engine 15.....	534	165	55,940	96.55	15.27
Engine 16.....	415	227	44,850	109.59	18.24
Engine 17.....	896	362	109,200	107.32	41.18
Engine 18.....	708	357	70,850	111.17	35.17
Engine 19.....	583	395	94,800	217.22	86.36

Summary — Service Reports, 1949, Engine Companies —
Concluded.

UNIT.	Alarms Attended.	Working Fires.	Hose Used, Feet.	Hours Work.	Pump Hours.
Engine 20.....	502	254	66,050	106.27	69.06
Engine 21.....	934	449	102,150	179.19	39.11
Engine 22.....	1,126	576	144,100	226.00	29.55
Engine 23.....	998	244	55,000	369.08	53.07
Engine 24.....	956	450	101,000	161.28	21.07
Engine 25.....	336	213	48,350	114.44	28.13
Engine 26.....	1,149	457	111,150	192.10	67.39
Engine 27.....	368	112	37,800	47.50	21.13
Engine 28.....	668	314	72,650	113.00	15.00
Engine 29.....	666	256	45,100	89.10	46.10
Engine 30.....	498	295	92,400	117.59	41.52
Engine 31 (Boat).....	128	15	6,550	32.05	18.37
Engine 32.....	356	255	40,050	162.41	49.15
Engine 33.....	735	493	118,800	200.27	38.07
Engine 34.....	509	146	47,950	70.00	23.00
Engine 36.....	336	199	47,150	78.01	33.23
Engine 37.....	927	525	129,950	183.57	30.20
Engine 39.....	311	113	40,250	92.38	7.24
Engine 40.....	263	206	28,200	34.37	6.43
Engine 41.....	647	390	86,000	133.24	56.28
Engine 42.....	941	399	95,600	150.20	36.55
Engine 43.....	786	362	97,550	134.03	31.00
Engine 44 (Boat).....	75	4	950	8.30	4.09
Engine 45.....	678	331	87,900	132.06	62.34
Engine 46.....	813	314	76,800	93.35	29.19
Engine 47 (Boat).....	225	19	3,600	22.06	13.44
Engine 48.....	505	322	91,250	169.00	88.00
Engine 49.....	292	178	49,050	90.18	61.00
Engine 50.....	496	202	48,700	102.06	15.41
Engine 51.....	363	128	38,050	53.08	25.15
Engine 52.....	571	317	59,350	93.23	16.34
Engine 53.....	553	234	75,950	112.30	43.10
Engine 54.....	32	30	7,650	23.50	11.38
Engine 55.....	162	79	28,550	65.57	26.51

USE OF APPARATUS.

Summary — Service Reports, 1949, Ladder Companies.

UNIT.	Alarms Attended.	Working Fires.	Ladders Used, Feet.	Hours Work.
Ladder 1.....	515	257	5,072	161.36
Ladder 2.....	392	267	3,292	87.00
Ladder 3.....	875	450	10,436	157.34
Ladder 4.....	1,385	676	12,060*	296.07
Ladder 5.....	656	230	2,052	65.30
Ladder 6.....	635	310	843*	101.32
Ladder 7.....	1,217	467	3,731	196.59
Ladder 8.....	495	220	8,977	126.56
Ladder 9.....	536	260	3,315	89.40
Ladder 10.....	769	349	2,201	149.09
Ladder 11.....	837	360	4,440	120.56
Ladder 12.....	1,175	566	16,166	325.13
Ladder 13.....	1,128	401	16,494	240.19
Ladder 14.....	850	458	4,783	154.25
Ladder 15.....	696	501	11,419	158.07
Ladder 16.....	773	341	1,705*	143.13
Ladder 17.....	624	390	10,332	137.22
Ladder 18.....	296	163	4,849	150.32
Ladder 19.....	321	205	2,118	53.00
Ladder 20.....	929	378	2,578	117.03
Ladder 21.....	273	210	1,500	75.16
Ladder 22.....	502	193	2,420	100.18
Ladder 23.....	1,179	578	9,755*	248.58
Ladder 24.....	568	366	8,858	143.33
Ladder 25.....	522	220	506*	110.02
Ladder 26.....	905	485	7,316*	162.54
Ladder 27.....	863	357	3,002*	117.59
Ladder 28.....	500	281	1,516*	109.00
Ladder 29.....	748	383	2,264*	124.48
Ladder 30.....	1,042	442	5,094	154.28
Ladder 31.....	457	163	1,365	82.23
Ladder 32.....	253	146	382*	67.36
Ladder 33.....	32	30	450	23.05

* Also used hose.

USE OF APPARATUS.

Summary — Service Reports, 1949, Rescue and Water Tower Companies.

UNIT.	Alarms Attended.	Working Fires.	Hours Work.
Rescue 1.....	1,316	409*	181.44
Rescue 2.....	2,837	659*	691.00
Rescue 3.....	671	198*	94.47
Tower 1.....	14	12	14.52
Tower 2.....	40	2	0.25
Lighting Plant 1.....	419	46	65.30
Lighting Plant 2.....	741	141	244.38
Lighting Plant 3.....	792	59	100.26

* Also performed service in various emergencies, accidents, inhalator cases, etc.

COMPARATIVE FIRE DEPARTMENT EXPENDITURES.

	1948.	1949.
A. PERSONAL SERVICE:		
Permanent employees	\$6,692,767 41	\$7,560,955 40
Overtime	1,219 74	989 82
	\$6,693,987 15	\$7,561,945 22
B. CONTRACTUAL SERVICES:		
Printing and binding	\$3,426 34	\$3,873 10
Advertising and posting	21 00	108 30
Transportation of persons	833 49	692 46
Express charges	230 00	131 41
Light, heat and power	47,400 65	49,823 82
Rent, taxes and water	20,231 88	20,237 19
Bond and insurance premiums	1,410 79	120 22
Communication	15,110 21	21,479 23
Motor vehicle repairs and care	27,060 46	31,620 09
Cleaning	3,572 37	3,810 47
Medical	1,313 65	1,000 00
Expert	470 00	855 00
Fees, service of venires, etc.	1,103 70	527 91
Photographic and blueprinting	16 00	657 00
General repairs	66,987 82	66,137 92
Miscellaneous services	3,380 40	8,060 00
	\$192,568 76	\$209,134 12
C. EQUIPMENT:		
Machinery	\$1,279 90	\$575 58
Electrical	12,955 54	18,733 23
Motor vehicles	—	29,379 62
Furniture and furnishings	11,355 14	11,444 89
Office	3,344 93	3,189 74
Carried forward	\$28,935 51	\$63,323 06

Comparative Fire Department Expenditures — Continued

	1948.	1949.
C. EQUIPMENT — Continued.		
<i>Brought forward</i>	\$28,935 51	\$63,323 06
Library	180 65	209 30
Marine	—	39 86
Tools and instruments	63,122 20	84,628 92
Tires, tubes and accessories	12,645 30	10,834 27
Wearing apparel	88,767 44	65,689 40
Miscellaneous equipment	7,671 74	5,133 16
	<u>\$201,322 84</u>	<u>\$229,857 97</u>
D. SUPPLIES:		
Office	\$18,753 76	\$20,027 54
Food and ice	34 00	2 00
Fuel	115,181 46	98,215 49
Medical, surgical, laboratory	891 74	1,023 80
Laundry, cleaning, toilet	5,302 36	4,087 98
Gasoline, oil and grease	43,531 48	43,336 41
Chemicals and disinfectants	18,362 67	4,657 48
Miscellaneous supplies	10,451 60	10,316 81
	<u>\$212,509 07</u>	<u>\$181,667 51</u>
E. MATERIALS:		
Building	\$19,160 06	\$15,905 26
Machinery	64 77	—
Electrical	30,386 09	27,329 63
Miscellaneous materials	57,034 41	64,903 33
	<u>\$106,645 33</u>	<u>\$108,138 22</u>
F. SPECIAL ITEMS:		
Pensions and annuities	\$910,689 78	\$964,271 20
Workmen's compensation	1,669 55	1,674 52
	<u>\$912,359 33</u>	<u>\$965,945 72</u>
Grand totals	<u>\$8,319,392 48</u>	<u>\$9,256,688 76</u>

FIRE DEPARTMENT REVENUE, 1949.

Permits for storage of inflammable fluids, certificates of registration, etc.	\$88,500 50
Sale of badges	8 70
Sale of old condemned hose	49 60
Sale of junk	970 52
Miscellaneous sales	954 11
Damage to apparatus and motor vehicles	2,411 41
Damage to fire alarm boxes	2,209 11
Total	<u>\$95,103 95</u>

FIRE ALARM DIVISION.

TOTAL NUMBER OF ALARMS TRANSMITTED.
(To Which Apparatus Responded.)

	1947.	1948.	1949.
First alarms (boxes).....	8,608	8,269	8,977
Still alarms — (net total).....	6,498	5,578	7,288
Total alarms — Boston only.....	15,106	13,847	16,265
Mutual aid.....	83	71	74
Total alarms.....	15,189	13,918	16,339
Alarms received from citizens by telephone.....	5,553	4,977	5,865
Per cent of total alarms.....	36.6	35.8	38.2
Total false alarms.....	2,036	2,129	2,151
Per cent of total alarms.....	13.4	15.3	13.2
Total box alarms transmitted since April 28, 1852, through December 31, 1948.....	330,954*	339,223	348,200

* First alarm received at 8.25 P.M. on April 29, 1852.

ANALYSIS OF STILL ALARMS RECEIVED AND TRANSMITTED.

	1947.	1948.	1949.
Received from citizens by telephone.....	5,553	4,977	5,865
Received from Police Department.....	858	729	966
Received from Fire Department.....	1,385	1,303	1,502
Boxes received, treated as stills.....	58	27	9
Emergency calls treated as stills.....	969	1,161	1,484
Received from Boston Automatic *.....	214	184	180
Received from A. D. T.*.....	118	116	98
Received from G. A. C.*.....	53	86	60
Gross totals.....	9,208	8,583	10,164
DEDUCT.			
Still alarms received for which box alarms were pulled after, and box alarm transmitted.....	191	83	107
Still alarms received for which box alarms were transmitted.....	2,519	2,922	2,769
Net total still alarms.....	6,498	5,578	7,288
Mutual Aid alarms.....	83	71	74

* Does not include alarms received after still alarm or after City box alarms, in which case no action was taken.

NOTE.— Net total still alarms indicates number of alarms for which apparatus was dispatched by telephone without box alarm and alarms for which private company box only was transmitted without City box alarm.

SUMMARY OF ALARMS DURING 1949 FROM BOSTON AUTOMATIC FIRE ALARM COMPANY, AMERICAN DISTRICT TELEGRAPH COMPANY, GENERAL ALARM COMPANY.

	Boston Automatic Fire Alarm Company.	American District Telegraph Company.	General Alarm Company.
Alarms transmitted by Company to Fire Alarm Headquarters.....	180	98	60
City box alarms transmitted after Company alarm had been transmitted.....	180	98	60
Company box alarm transmitted, no City box alarm transmitted.....	—	—	—
Company alarm transmitted, City box pulled by citizen after Company alarm transmitted, City box transmitted.....	—	—	—
Company alarm received after still alarm or City box alarm, and therefore not transmitted.....	2	10	3

ANALYSIS OF FALSE ALARMS.

	1947.	1948.	1949.
Box alarms received and transmitted.....	1,935	2,055	2,084
Telephone alarms received for which box alarms were transmitted.....	21	40	35
Boston Automatic alarms received for which box alarms were transmitted.....	1	1	—
A. D. T. alarms received for which box alarms were transmitted.....	2	—	1
G. A. C. alarms received for which box alarms were transmitted.....	—	—	—
Total false alarms for which box alarms were transmitted.....	1,959	2,096	2,120
Box alarms received, treated as still alarms (no box transmitted).....	44	11	4
Telephone alarms received, treated as still alarms (no box transmitted).....	33	22	27
Total false alarms to which apparatus responded.....	2,036	2,129	2,151
Adjacent box alarms received for which no action was taken.....	4	4	3

ANALYSIS OF ALARMS BY MONTHS.

1949.		January.	February.	March.	April.	May.	June.	July.	August.	September.	October.	November.	December.	Total.
Alarmers.	Box.....	958	613	910	728	674	720	758	693	564	835	754	750	8,957
	Telephone.....	568	288	522	524	427	532	759	641	431	546	483	416	6,137
	Other calls.....	155	67	152	164	88	150	120	91	39	60	64	80	1,030
	Totals.....	1,681	968	1,584	1,416	1,189	1,402	1,637	1,425	1,034	1,441	1,301	1,246	16,324
Alarms Received From.	Members.....	1	—	2	7	4	5	7	5	7	6	3	—	47
	Police.....	17	3	7	10	10	24	21	19	5	15	10	5	146
	Wachman.....	8	17	11	10	13	23	13	18	4	6	2	4	129
	Automatic.....	34	17	31	19	19	18	29	21	25	20	31	40	304
	Unknown.....	224	141	190	175	163	151	116	134	189	305	228	162	2,178
	Outsider.....	1,397	790	1,343	1,195	980	1,181	1,451	1,228	804	1,089	1,027	1,035	13,550
	Totals.....	1,681	968	1,584	1,416	1,189	1,402	1,637	1,425	1,034	1,441	1,301	1,246	16,324

	False.....	224	141	190	175	163	151	116	134	189	296	222	159	2,160
No Fires.	Accidental.....	38	16	30	19	20	14	33	19	24	17	25	30	285
	Reckless.....	169	112	142	126	144	133	130	156	146	155	185	1736	
	Needles bent.....	62	49	61	38	57	46	51	48	35	51	61	87	646
	Needles still.....	46	47	32	33	33	36	34	41	30	37	42	55	475
	Automobile fires.....	77	63	96	77	107	121	90	114	80	118	115	99	1,157
Krupps and Krupps and Fires.	Rubbish, vacant lot.....	138	40	109	133	114	163	171	125	73	110	68	41	1,285
	Rubbish, near building.....	45	20	41	51	46	65	40	43	17	52	33	30	483
	Dump.....	11	1	11	7	4	5	9	8	—	4	12	1	73
	Brush or grass.....	239	60	388	334	122	178	449	346	77	180	144	78	2,595
	Other outdoor.....	211	41	79	91	74	159	181	140	74	116	87	68	1,321
Fires.	Marine.....	1	1	—	—	3	2	5	2	4	2	—	4	24
	Out of city calls.....	8	6	5	12	10	6	3	6	6	5	11	2	80
Fires.	Confined to room.....	362	319	336	257	253	269	268	233	224	246	222	283	3,270
	Confined to building.....	45	48	60	52	32	47	45	34	32	60	100	120	675
	Extended to others.....	5	4	11	7	7	6	2	4	4	4	4	4	59

MULTIPLE ALARM FIRES.

	1945.	1946.	1947.	1948.	1949.
Two Alarms.....	61	54	49	65	64
Three Alarms.....	12	24	15	18	18
Four Alarms.....	5	4	7	1	2
Five Alarms.....	0	0	0	1	—
Totals.....	78	82	71	85	84

SUMMARY OF MULTIPLE ALARM FIRES
ACCORDING TO MONTHS OF THE YEAR—1949.

	Two Alarms.	Three Alarms.	Four Alarms.	Five Alarms.	Total.
January.....	13	4	—	—	17
February.....	3	2	—	—	5
March.....	5	—	1	—	6
April.....	7	2	—	—	9
May.....	3	1	—	—	4
June.....	5	1	—	—	6
July.....	5	1	—	—	6
August.....	4	2	—	—	6
September.....	3	—	1	—	4
October.....	3	1	—	—	4
November.....	5	—	—	—	5
December.....	8	4	—	—	12
Totals.....	64	18	2	—	84

SUMMARY OF ALARMS
ACCORDING TO DAY OF WEEK—1949.

	Boxes.	Stills.*	Total.	Number of Days in Year.	Average Per Day.
Monday.....	1,339	1,107	2,446	52	47.0
Tuesday.....	1,318	1,098	2,416	52	46.4
Wednesday.....	1,236	994	2,230	52	42.8
Thursday.....	1,216	1,084	2,300	52	44.2
Friday.....	1,174	1,049	2,223	52	42.9
Saturday.....	1,444	1,091	2,535	53	47.8
Sunday.....	1,238	939	2,177	52	41.8
Totals.....	8,977	7,362	16,339	365	44.8

* Alarms received from B.A., A.D.T., or G.A.C., where private company box only was transmitted without City box, have been included under *Still Alarms*.
All alarms for *Mutual Aid* have been included under *Still Alarms*.

SUMMARY OF ALARMS
ACCORDING TO TIME OF DAY—1949.

	Boxes.	Stills.	Total.
12.00 Mid.—1.00 A.M.....	300	183	483
1.00 A.M.—2.00 A.M.....	323	154	477
2.00 A.M.—3.00 A.M.....	196	101	297
3.00 A.M.—4.00 A.M.....	107	79	186
4.00 A.M.—5.00 A.M.....	84	62	146
5.00 A.M.—6.00 A.M.....	78	57	135
6.00 A.M.—7.00 A.M.....	100	44	144
7.00 A.M.—8.00 A.M.....	138	104	242
8.00 A.M.—9.00 A.M.....	156	158	314
9.00 A.M.—10.00 A.M.....	220	251	471
10.00 A.M.—11.00 A.M.....	289	335	624
11.00 A.M.—12 Noon.....	353	379	732
12.00 Noon—1.00 P.M.....	423	464	887
1.00 P.M.—2.00 P.M.....	382	452	834
2.00 P.M.—3.00 P.M.....	483	506	989
3.00 P.M.—4.00 P.M.....	625	588	1,213
4.00 P.M.—5.00 P.M.....	775	629	1,404
5.00 P.M.—6.00 P.M.....	793	635	1,428
6.00 P.M.—7.00 P.M.....	656	510	1,166
7.00 P.M.—8.00 P.M.....	595	414	1,009
8.00 P.M.—9.00 P.M.....	649	418	1,067
9.00 P.M.—10.00 P.M.....	545	355	900
10.00 P.M.—11.00 P.M.....	348	282	630
11.00 P.M.—12.00 Mid.....	349	202	551
Totals.....	8,977	7,362	16,339

**SUMMARY OF ALARMS
ACCORDING TO FIRE DISTRICTS — 1949.**

DISTRICTS.	Boxes.	Stills.	Total.
1. East Boston	406	408	814
2. Charlestown	421	298	719
4. North and West Ends	617	369	986
5. Business District	336	214	550
6. South Boston	669	522	1,191
7. South End and Back Bay	999	604	1,603
8. Roxbury (West)	1,082	733	1,815
9. Roxbury (East)	999	590	1,589
10. Dorchester (North)	797	626	1,423
11. Brighton	648	624	1,272
12. Jamaica Plain	453	441	894
13. Roslindale, West Roxbury	483	548	1,031
14. Dorchester (South)	700	727	1,427
15. Hyde Park	367	584	951
Total in Boston	8,977	7,288	16,265
Mutual Aid to outside Cities and Towns	—	74	74
Totals	8,977	7,362	16,339

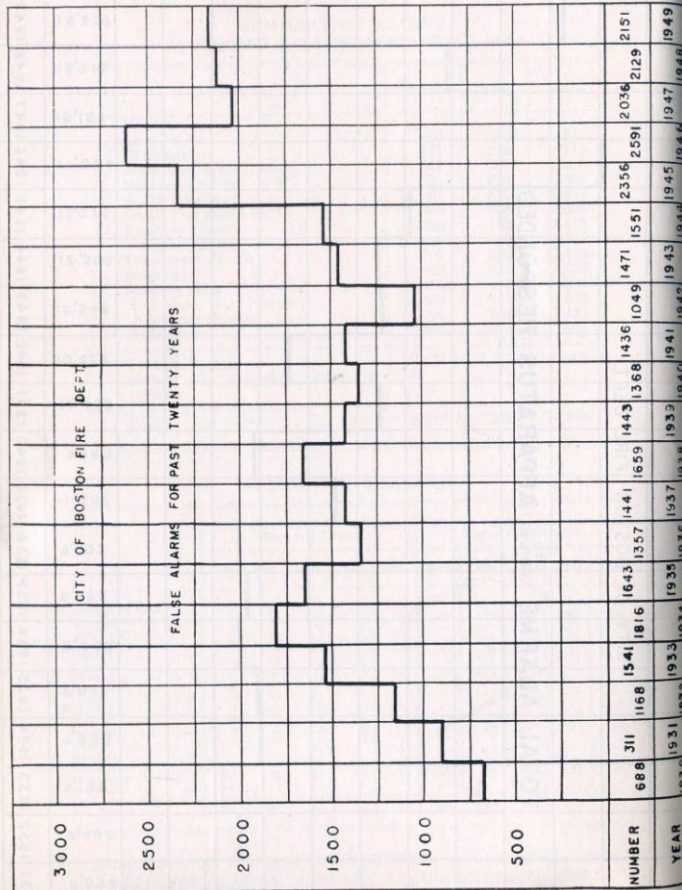
MUTUAL AID RESPONSE.

	Response of BOSTON to Outside Cities and Towns.					Response of Adjacent Cities and Towns TO BOSTON.				
	1945.	1946.	1947.	1948.	1949.	1945.	1946.	1947.	1948.	1949.
Biddeford, Maine.....	—	—	1	—	—	—	—	—	—	—
Brookline.....	9	19	14	11	7	97	119	97	83	78
Cambridge.....	2	—	1	4	1	—	—	1	1	1
Chelsea.....	4	17	12	9	8	—	—	3	8	5
Dedham.....	—	1	—	—	—	13	26	20	15	16
Everett.....	4	2	1	4	—	3	2	1	1	1
Fitchburg.....	—	—	1	—	—	—	—	—	—	—
Gloucester.....	—	—	1	—	—	—	—	—	—	—
Lynn.....	—	—	1	—	—	—	—	—	—	—
Malden.....	1	—	2	—	—	—	—	—	2	2
Milton.....	4	7	7	3	8	—	1	—	—	—
Newton.....	—	—	3	2	—	20	19	16	14	26
Quincy.....	4	—	3	3	—	—	2	—	1	2
Reading.....	—	—	1	—	—	—	—	—	—	—
Revere.....	—	—	2	—	1	—	—	—	—	—
Somerville.....	31	33	35	35	46	23	41	34	27	40
Waltham.....	—	1	—	—	—	—	—	—	—	—
Totals.....	61	85	83	71	74	156	210	172	152	171

**SUMMARY OF EMERGENCY SERVICES, ACCIDENTAL, AND
NEEDLESS ALARMS, JANUARY 1—DECEMBER 31, 1949.**

Total Alarms — Emergency Service	1,736
Accidental Alarms	285
Needless Alarms	1,121

	CITY OF BOSTON FIRE DEPT.	TOTAL ALARMS TO WHICH APPARATUS RESPONDED	1930	1931	1932	1933	1934	1935	1936	1937	1938	1939	1940	1941	1942	1943	1944	1945	1946	1947	1948	1949
			8,488	8,694	9,407	9,103	9,968	9,837	9,493	9,678	9,603	11,537	9,940	12,438	10,627	12,348	12,358	13,074	17,084	15,189	13,916	16,339



SUMMARY OF FIRE ALARM BOXES.

Total number of Fire Alarm Boxes in service as of December 31, 1948 1,818
 Fire Alarm Boxes installed January 1 to December 31, 1949 . . . 17
 Fire Alarm Boxes removed January 1 to December 31, 1949 . . . 4
 Net increase in number of boxes 13

Total number of Fire Alarm Boxes in service as of December 31, 1949 1,831

FIRE ALARM BOXES IN DISTRICTS.

District 1 102	District 9 118
District 2 105	District 10 148
District 3 108	District 11 163
District 4 72	District 12 106
District 5 187	District 13 180
District 6 105	District 14 165
District 7 143	District 15 129

FIRE ALARM BOXES IN DIVISIONS.

Division 1 387
Division 2 598
Division 3 846
Total <u>1,831</u>

**CONSTRUCTION WORK.
UNDERGROUND CABLES — 1949.**

TYPE OF CABLE.		Number, Conductor.	INSTALLED.		REMOVED.	
Insulation.	Jacket.		Feet of Cable.	Feet of Conductors.	Feet of Cable.	Feet of Conductors.
Polyethylene	Polyethylene	4	4,385	17,540	—	—
Rubber	Lead	4	—	—	950	3,800
Rubber	Lead	6	—	—	125	750
Polyethylene	Polyethylene	7	1,980	13,860	—	—
Polyethylene	Polyethylene	10	5,025	50,250	—	—
Rubber	Lead	10	—	—	2,103	21,030
Rubber	Lead	15	—	—	425	6,375
Polyethylene	Polyethylene	19	9,685	184,015	—	—
Rubber	Lead	19	—	—	1,865	35,485
Rubber	Lead	20	—	—	225	4,500
Polyethylene	Polyethylene	37	2,635	97,495	—	—
Rubber	Lead	37	64	2,368	1,223	45,251
Polyethylene	Polyethylene	61	460	28,060	—	—
Totals....			24,234	393,588	6,916	117,141

OVERHEAD WIRE AND CABLE — 1949.

	Installed, Feet.	Removed, Feet.
No. 9, AWG, galvanized, T.B.W.P.	—	8,220
No. 10, AWG, copperweld, T.B.W.P.	8,415	—
No. 14, AWG, twisted pair	600	—
No. 14-2, Cond., Anhydrex insulation, neoprene jacket	6,000	—
No. 14-4, Cond., polyethylene insulation, polyethylene jacket	375	—
Totals.	15,390	8,220

Overhead line wire removed was not replaced due to abandonment of poles.

Overhead construction transferred on 170 poles.

Overhead construction removed from 36 poles.

Overhead construction installed on 75 poles.

FIRE ALARM BOXES INSTALLED IN 1949.

DATE.	Box.	Location.
Jan. 29	12-2425	Glenside Hospital, 6 Parley Vale.
March 13	14-7122	Commonwealth Pier, Lower Level, West Section.
March 13	15-7122	Commonwealth Pier, Upper Level, East Section.
March 13	16-7122	Commonwealth Pier, Upper Level, Center Section and Concourse.
March 13	17-7122	Commonwealth Pier, Upper Level, West Section.
March 26	12-3552	Walter Baker & Co., Inc., River street, opposite Washington street.
Aug. 3	2888	Veterans of Foreign Wars Parkway, near Caledonian avenue.
Aug. 19	12-2226	Sherwin School, Sterling street.
Sept. 19	3836	Turtle Pond Parkway and Upton street.
Sept. 19	3837	Turtle Pond Parkway and Berwick street.
Oct. 5	6181	Glendon and Condor streets.
Oct. 7	12-3524	Roger Wolcott School, 441 Norfolk street.
Oct. 24	13-1356	Suffolk County Jail, 215 Charles street.
Oct. 26	2425	Robinwood avenue, opposite No. 66.
Nov. 7	12-2312	M. T. A., Kenmore Square Busway.
Nov. 9	12-1332	Wayfarer's Lodge, 30 Hawkins street.
Dec. 28	12-4125	Hoosac Docks, Grain Elevator Stores.

FIRE ALARM BOXES DISCONTINUED IN 1949.

DATE.	Box.	Location.
May 6	12- 241	House of the Angel Guardian, Hyde square.
Aug. 5	12-2344	New Rawson Company Building, 176-184 Ipswich street.
Sept. 22	12-6184	Philip Sheridan School, Prescott and Trenton streets.
Oct. 3	12-1546	Back Bay Station.

REVENUE RECEIVED FOR LICENSES, PERMITS, ETC., FOR THE YEAR 1949.

Month.	Blasting, Transportation and Sale of Explosives.	Fireworks.	License Renewals.	Open-Air Fires.	Permits— Inflammable Fluids.	Tank Removals.	Gross Totals.	Deductions for payment on Permits.	Net Totals.
January.....	\$3 00	—	\$84 00	\$42 00	\$405 50	\$2 00	\$626 50	—	\$626 50
February.....	50	—	504 00	34 50	315 50	1 50	916 00	\$16 00	900 00
March.....	4 00	—	6,409 50	75 50	1,954 00	1 50	8,444 50	—	8,444 50
April.....	4 00	\$0 50	12,109 00	136 00	7,175 00	1 00	19,515 50	3 00	19,512 50
May.....	3 00	0 50	15,574 50	198 00	11,298 50	2 50	27,007 00	1 50	27,005 50
June.....	1 50	—	2,654 00	56 50	9,424 00	2 00	12,138 00	—	12,137 50
July.....	4 00	—	3,851 50	143 50	717 00	2 00	4,718 00	—	4,718 00
August.....	2 50	—	5,209 00	214 50	516 00	1 50	5,943 50	1 00	5,942 50
September.....	5 00	—	3,584 00	228 50	699 00	2 50	4,519 00	1 50	4,517 50
October.....	2 50	—	585 50	215 50	873 50	1 50	1,678 50	—	1,678 50
November.....	3 50	—	743 50	116 00	843 50	3 50	1,710 00	—	1,710 00
December.....	3 00	—	443 00	\$2 00	778 50	1 00	1,307 50	—	1,307 50
Totals.....	\$36 50	\$1 00	\$51,901 50	\$1,542 50	\$35,020 00	\$22 50	\$88,524 00	\$23 50	\$88,500 50

Total receipts for 1949
Total receipts for 1948
Net gain

\$88,500 50
80,545 50
\$1,645 00

SUMMARY OF INSPECTIONS AND INVESTIGATIONS — 1949.

GENERAL INSPECTIONS	
Dwelling houses, other than 1- and 2-family	18,912
Places of assembly, cabarets, dance halls, etc.	4,332
Mercantile and manufacturing occupancy	3,980
Department, small retail stores, etc.	4,889
Mystic Docks, Charlestown	2,196
Reinspections (all types)	7,304
SPECIAL INSPECTIONS AND SURVEYS	
Private schools	150
Oil farms	8
Film exchanges	26
Libraries	23
Boarding homes for the aged, convalescent homes, etc.	181
Jails, institutions, etc.	9
Reinspections (all types)	130
INSPECTIONS BY FIRE COMPANY OFFICERS	
Building inspections	16,398
Theaters	4,784
Schoolhouses	3,541
Public buildings	811
Carbarns	60
Fuel oil burner installations and equipment	7,195
Inflammable fluids, storage facilities	450
Open air fires	581
Tank removals	45
License renewals, garage, repair shop, inflammables	2,695
License renewals, parking lots	319
License petitions (location approval)	207
Blasting	73
Boarding homes for children	165
Day nurseries	40
Hospitals	172
Reinspections (all types)	6,301
Total inspections and reinspections	85,977
Hazardous conditions remedied	
Conditions referred to other departments (written)	22,484
	354
FIRE DRILLS — FIRE PREVENTION WEEK	
Schools	272
Theaters	72
Hospitals, institutions, etc.	144

ARSON SQUAD ACTIVITIES — 1949.

Fires reported as of suspicious origin	38
Fires reported as of undetermined origin	97
Fires, multiple alarms	76
Fires, cause given, but investigated	112
Fires, result of which loss of life occurred	11
Fires alleged to be set by boys	42
Fire prevention inspections	134
Tests made of manholes, catch-basins, inflammable gases	94
Cases forwarded to District Attorney's office	7
Cases presented to the Grand Jury, Suffolk County	9
Convictions, Superior Court, Suffolk County	4
Cases presented, Municipal District Courts	16
Convictions, Municipal Courts	13

CHEMICAL LABORATORY.**(Summary of Analyses and Tests — 1949.)**

Tests of flammable liquids	21
Tests of decorative materials	646
Analysis of material for Arson Squad	15

PHOTOGRAPHIC LABORATORY.**(Summary of Activities — 1949.)**

Suspicious and undetermined fires	61
Poor housekeeping, hazardous conditions	35
Multiple alarm fires	65
Accidents	49
Photographs of members of the department	1,700
Miscellaneous photographs, drills, fire prevention week activities, new apparatus and equipment, fire stations, firemen's ball, photographs for annual report	1,500

CAUSES OF FIRES IN BUILDINGS — 1949.

Fireworks	3
Careless smoking	1,294
Chimneys: Defective, soot, and sparks	316
Fuel oil burners	673
Electrical appliances and motors	349
Children and matches	209
Unknown	110
Miscellaneous known causes	193
Spontaneous ignition	93
Defective heaters and rubbish	140
Grease and food on stove	120
Other careless use of matches	52
Hot ashes	31
Defective wiring	165
Incendiary or suspicious	41
Clothes too near fire	45
Flammable liquids	19
City gas and appliances	21
Sparks from machines	30
Thawing water pipes	2
Malicious mischief	95
Kerosene lamps, stoves	2
Home dry cleaning	1
1949 Total	4,004

CAUSES OF OUTDOOR FIRES — 1949.

Brush	2,595
Automobile	1,157
Other outdoor fires	1,321
Rubbish (vacant lot)	1,285
Rubbish (near building)	483
Dump	73
Marine	24
1949 Total	6,938
Rescues (emergency calls)	1,736
Out of city calls	80
	1,816

MAINTENANCE DIVISION.

RECORD OF HOSE.

PURCHASED.	Condemned.	Repaired.	In Service.	In Stock.
38,500 ft.	21,650 ft.	17,754 ft.	242,250 ft.	9,483 ft.

PAINTING ACTIVITIES.

TYPE OF WORK.	Number of Jobs.	Labor Costs.	Material Costs.	Total Costs.
Complete apparatus.....	17	\$4,783 89	\$871 65	\$5,655 54
Partial apparatus.....	108	762 63	126 33	888 96
Miscellaneous.....	177	1,618 79	162 21	1,781 00
	302	\$7,165 31	\$1,160 19	\$8,325 50

REPAIRS TO APPARATUS.

PERFORMED By →	B. F. D. Maint. Div.	Outside Concerns.	Total.
Number of jobs.....	4,659	466	5,125
Cost of labor and material.....	\$55,247 78	\$31,843 56	\$87,091 34

REPAIRS TO BUILDINGS.

PERFORMED By →	B. F. D. Maint. Div.	Outside Concerns.	Total.
Number of jobs.....	845	315	1,160
Cost of labor.....	\$23,278 70	—	—
Cost of material.....	5,954 91	—	—
Total Cost.....	\$29,233 61	\$19,663 16	\$48,896 77

REPAIRS TO FIREBOATS.

	COST, MATERIAL.			Total.
	Lumber.	Packing.	Valves.	
B. F. D., Maintenance Division.....	\$66 58	\$38 27	\$465 85	\$570 70
Outside Concerns.....			\$12,820 00	

MOTOR EQUIPMENT INVENTORY.

TYPE OF EQUIPMENT.	In Service.	In Reserve.
Pumping Engines.....	52	25
Hose Cars.....	41	28
Aerial Ladder Trucks.....	22	18
Junior Aerial Ladder Trucks.....	6	—
City Service Ladder Trucks.....	4	8
Water Towers.....	2	2
Wrecking Unit.....	1	—
Rescue Cars.....	3	1
Fuel Cars.....	2	—
Lighting Plants.....	3	1
Auxiliary Pumps.....	6	—
Chief Officers' Cars.....	55	12
Commercial Trucks.....	29	4
Totals.....	226	99

RECORD OF UNIFORM CLOTHING.

ARTICLE.	Received and Distributed.	Repaired and Cleansed.	Reissued.
Overcoats.....	542	37	68
Sack Coats.....	561	40	70
Trousers.....	1,460	115	13
Uniform Caps.....	1,475	—	47
Rubber Fire Coats.....	* 413	350	10
Dungarees.....	1,700	—	—

REPORT TO THE DIRECTOR

Case No.	Date	Place	Subject
100-100000	10/1/50	New York	...
100-100001	10/2/50	New York	...
100-100002	10/3/50	New York	...
100-100003	10/4/50	New York	...
100-100004	10/5/50	New York	...
100-100005	10/6/50	New York	...
100-100006	10/7/50	New York	...
100-100007	10/8/50	New York	...
100-100008	10/9/50	New York	...
100-100009	10/10/50	New York	...
100-100010	10/11/50	New York	...
100-100011	10/12/50	New York	...
100-100012	10/13/50	New York	...
100-100013	10/14/50	New York	...
100-100014	10/15/50	New York	...
100-100015	10/16/50	New York	...
100-100016	10/17/50	New York	...
100-100017	10/18/50	New York	...
100-100018	10/19/50	New York	...
100-100019	10/20/50	New York	...
100-100020	10/21/50	New York	...
100-100021	10/22/50	New York	...
100-100022	10/23/50	New York	...
100-100023	10/24/50	New York	...
100-100024	10/25/50	New York	...
100-100025	10/26/50	New York	...
100-100026	10/27/50	New York	...
100-100027	10/28/50	New York	...
100-100028	10/29/50	New York	...
100-100029	10/30/50	New York	...
100-100030	10/31/50	New York	...

REPORT TO THE DIRECTOR

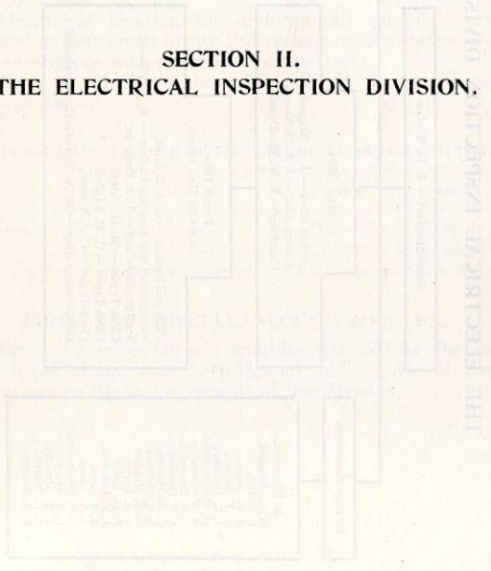
Case No.	Date	Place	Subject
100-100031	11/1/50	New York	...
100-100032	11/2/50	New York	...
100-100033	11/3/50	New York	...
100-100034	11/4/50	New York	...
100-100035	11/5/50	New York	...
100-100036	11/6/50	New York	...
100-100037	11/7/50	New York	...
100-100038	11/8/50	New York	...
100-100039	11/9/50	New York	...
100-100040	11/10/50	New York	...
100-100041	11/11/50	New York	...
100-100042	11/12/50	New York	...
100-100043	11/13/50	New York	...
100-100044	11/14/50	New York	...
100-100045	11/15/50	New York	...
100-100046	11/16/50	New York	...
100-100047	11/17/50	New York	...
100-100048	11/18/50	New York	...
100-100049	11/19/50	New York	...
100-100050	11/20/50	New York	...
100-100051	11/21/50	New York	...
100-100052	11/22/50	New York	...
100-100053	11/23/50	New York	...
100-100054	11/24/50	New York	...
100-100055	11/25/50	New York	...
100-100056	11/26/50	New York	...
100-100057	11/27/50	New York	...
100-100058	11/28/50	New York	...
100-100059	11/29/50	New York	...
100-100060	11/30/50	New York	...

REPORT TO THE DIRECTOR

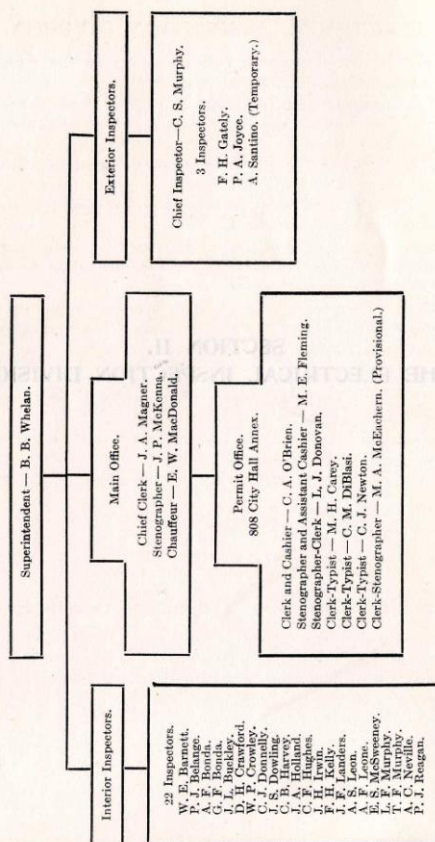
Case No.	Date	Place	Subject
100-100061	12/1/50	New York	...
100-100062	12/2/50	New York	...
100-100063	12/3/50	New York	...
100-100064	12/4/50	New York	...
100-100065	12/5/50	New York	...
100-100066	12/6/50	New York	...
100-100067	12/7/50	New York	...
100-100068	12/8/50	New York	...
100-100069	12/9/50	New York	...
100-100070	12/10/50	New York	...
100-100071	12/11/50	New York	...
100-100072	12/12/50	New York	...
100-100073	12/13/50	New York	...
100-100074	12/14/50	New York	...
100-100075	12/15/50	New York	...
100-100076	12/16/50	New York	...
100-100077	12/17/50	New York	...
100-100078	12/18/50	New York	...
100-100079	12/19/50	New York	...
100-100080	12/20/50	New York	...
100-100081	12/21/50	New York	...
100-100082	12/22/50	New York	...
100-100083	12/23/50	New York	...
100-100084	12/24/50	New York	...
100-100085	12/25/50	New York	...
100-100086	12/26/50	New York	...
100-100087	12/27/50	New York	...
100-100088	12/28/50	New York	...
100-100089	12/29/50	New York	...
100-100090	12/30/50	New York	...

...

SECTION II.
THE ELECTRICAL INSPECTION DIVISION.



THE ELECTRICAL INSPECTION DIVISION.



ELECTRICAL INSPECTION DIVISION.

The following report shows the work of the Electrical Inspection Division for the year 1949.

The underground district for 1949 was prescribed and public notice given thereof in accordance with chapter 100 of the Acts of 1946.

Hearings were held on the streets proposed for the 1950 underground district. Notices were mailed by the City Clerk to the abutters on the proposed streets in accordance with provisions of the law.

Hearings were held on terminal pole locations and interested parties notified in accordance with provisions of the law.

Grants of location for underground conduit were issued as petitioned for by the various utility companies in accordance with provisions of the law.

Data on all of the above is on file in the records of this division.

EXPENSES AND INCOME OF THE DIVISION FOR 1948 AND 1949.

	1948.	1949.
Expenses.....	\$108,268 79	\$130,993 74
Income.....	66,649 14	67,055 21

FIRES AND MISCELLANEOUS TROUBLES.

Fires and miscellaneous troubles reported as due to electrical causes were investigated and reports of the same are on file in the records of this division.

**Causes of Fires and Miscellaneous Troubles Investigated
by the Electrical Inspection Division in 1949.**

Fixtures and portable lamps	46
Flexible cords and cables	23
Insulation breakdowns	23
Armored cables	10
Transformers (bell and fluorescent)	7
Receptacles and switches (flush)	7
Radios	5
Caused by water leaks	4
Overhead service feeders	3
Christmas trees	3
Oil burner controls	3
Circuit breakers	2
Service entrance switches	2
Defective fuse holders	2
Overloaded lamp holders	2
Chimes coil	1
Television	1
Battery charger	1
Total	145

MOTORS.

Refrigeration	42
Miscellaneous	16
Oil burners	6
Elevators	4
Washing machines	3
Total	71

UTILITIES.

Manholes	10
Pole lines	5
Transformers	4
Underground conduits	2
Post light	1
Pot head	1
Total	23
Grand total	239

EXTERIOR DIVISION.

The following are the proposed streets selected by the Fire Commissioner for the 1950 underground district in accordance with chapter 100, Acts of 1946:

Boston Proper.

Mountfort street, from Beacon street to St. Mary's street.

Brighton.

Cambridge street, from Lincoln street to Soldiers Field road.

Dorchester.

Cummins Highway, from Greenfield road to West Roxbury line.

East Boston.

East Eagle street, from Putnam street to Chelsea street; Chelsea street, from Saratoga street to Chelsea line.

Hyde Park.

Business street, from 1305 River street to 1494 River street.

Roxbury.

Huntington avenue, from Fenwood road to South Huntington avenue; Iroquois street, from Calumet street to Wait street.

South Boston.

Old Harbor street, from Telegraph street to 100 feet north.

West Roxbury.

Cummins Highway, from Hyde Park avenue to Dorchester line; Park Lawn road, from Church street to Weld street.

Charlestown.

Gardner street, Roland street, Mishawum street, Baldwin street, from Main street to Rutherford avenue.

Making a total distance of four miles in accordance with law.

The ducts used for the underground conduits of the drawing-in system are of the following:

1. Vitrified clay (laid in concrete)
2. Fiber (laid in concrete)
3. Iron
4. Wood
5. Transite (laid in concrete)

In side or residential streets special underground construction for light and power purposes (115-230 volts), of a type known as "Split Fiber Solid Main System," has been installed.

EXPENDITURES.

	1948.	1949.
PERSONAL SERVICE:		
Permanent employees	\$100,803 12	\$122,481 09
CONTRACTUAL SERVICE:		
Printing and binding	135 00	224 00
Advertising and posting	65 30	102 30
Transportation of persons	1,425 10	1,494 15
Bond and insurance premiums	40 00	40 00
Communication	630 54	994 04
General repairs	9 50	38 97
	<u>\$2,305 44</u>	<u>\$2,893 46</u>
EQUIPMENT:		
Office	\$32 45	—
Library	—	\$30 00
Tools and instruments	4 50	—
	<u>\$36 95</u>	<u>\$30 00</u>
SUPPLIES:		
Office	\$2,214 36	\$2,546 57
MATERIALS:		
Electrical	\$8 00	\$7 70
SPECIAL ITEMS:		
Pensions	\$2,899 92	\$3,024 92
Workmen's Compensation	—	10 00
	<u>\$2,899 92</u>	<u>\$3,034 92</u>
Grand totals	<u>\$108,268 79</u>	<u>\$130,993 74</u>

UNDERGROUND WORK FOR THE YEAR 1949.

COMPANY.	LENGTH IN FEET.		NUMBER OF	
	Conduit.	Duct.	Cable.	Manholes, Services.
Boston Edison Company	64,130	102,048	199,386	123 790
New England Telephone and Telegraph Company	4,413	4,582	189,427	1 48
Boston Consolidated Gas Company	1,813	4,677	45,941.7	2 14
Boston Fire Department	180	180	24,234	5
Boston Police Department	—	—	7,872	—
Metropolitan Transit Authority	—	—	13,005.3	—
Western Union Telegraph Company	—	—	1,045	—

TABLE SHOWING WORK OF EXTERIOR DIVISION — 1949.

Number of poles set in new locations	79
Number of poles removed	61
Number of poles reset, replaced, straightened	296
Number of poles standing in public streets	19,086
Number of inspections	6,169
Number of notices of overhead construction	2,598
Number of overhead reports	1,717
Number of notices of underground construction	980
Number of underground reports	1,233
Feet of wire removed by the various companies	4,472,661

SUMMARY OF WORK OF INTERIOR DIVISION — 1949.

Permits issued to perform work	17,198
Permits issued to turn on current	15,371
Number of inspections made	35,960
Number of inspections of theaters	1,008

CHARACTER OF CABLES USED BY THE VARIOUS COMPANIES — 1949.

COMPANY.	Type of Insulation.	Size.
Boston Edison Company	Rubber, varnished cambric lead	No. 6 to 1,500 M.C.M.
New England Telephone and Telegraph Company	Paper, lead	2—2,121 pairs, Nos. 13-26.
Boston Consolidated Gas Company	Rubber, varnished cambric and lead, paper and lead	No. 6 to 1,000 M.C.M.
Boston Fire Department	Rubber, polyethylene, lead	4 to 37 conductors.
Boston Police Department	Rubber, paper, lead	11 conductors and 10 pairs.
Metropolitan Transit Authority	Rubber, neoprene, lead	No. 6 to 1,000 M.C.M.
Western Union Telegraph Company	Paper, lead sheath	Nos. 11-14, 26 pairs.