

\$20,000 BLAZE FOLLOWS TIRE PLANT BLAST

District in Uproar as Special Police Are Rushed to Scene—3 Alarms

FRANTIC EFFORTS CONFINE FLAMES

Man Jumps Out of Window—Others Flee in Terror—Patients Upset

One man was forced to leap for life from a second story window, 10 other men and two women fled in terror before a blast of flame, and choking fumes invaded every part of the City Hospital early last night as fire following an explosion swept the plant of the Harvey Tire & Rubber Company of 875 Massachusetts avenue, a retreading concern, causing loss of more than \$20,000. One fireman was injured.

As firemen equipped with gas masks fought desperately for more than five hours to check the blaze, acrid smoke from 30,000 burning automobile tires billowed into every building of the hospital near.

Even after Dr. James W. Manary, superintendent, ordered all windows closed, the pungent fumes seeped into scores of the wards, causing considerable discomfort to hundreds of patients. At no time, however, was the hospital threatened by the flames.

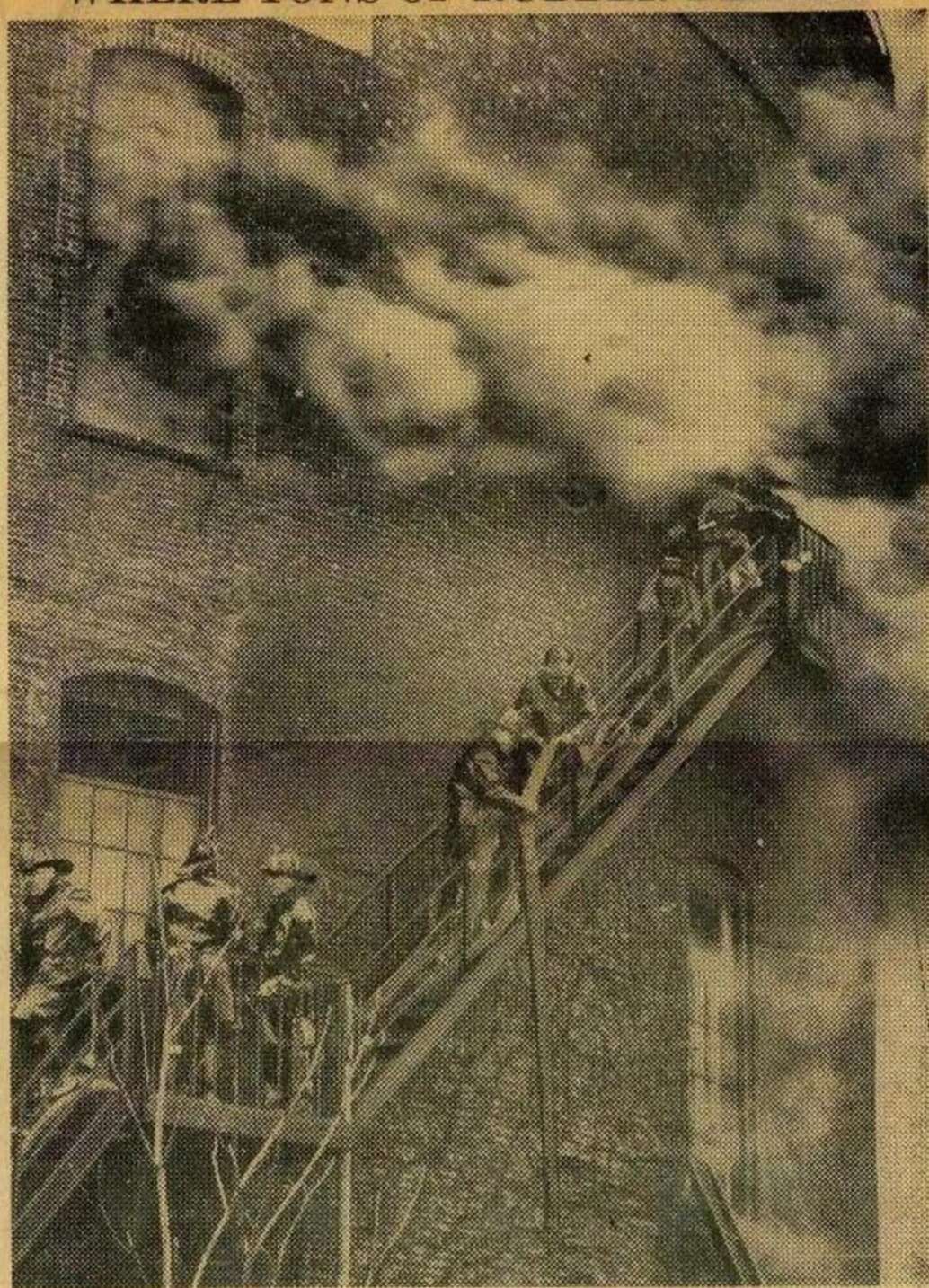
Fearing for the safety of the patients as a brisk wind sent great clouds of black smoke in the direction of the institution, Chief Samuel J. Pope of the fire department sounded three alarms in an effort to control the fire quickly by a heavy concentration of men and apparatus. Again and again firemen were driven back by the fumes, despite their protecting masks.

WORST TRAFFIC JAM

Breaking out at the evening rush hour, the fire caused the worst traffic jam in that section of the city in police annals. Supt. Edward W. Fallon led a special squad of 50 policemen from headquarters to assist crews from the Dorchester and Roxbury stations in rerouting traffic. Trolley lines between South Boston, Dorchester and the Dudley street terminal were closed down and homeward-bound commuters diverted to rapid transit lines and buses.

As a large quantity of rubber cement and gasoline in the plant of the retreading company exploded with a terrific roar, flames raced

WHERE TONS OF RUBBER BLAZED



Firemen retreating from Massachusetts avenue tire retreading factory yesterday.

through the workshop and spread to huge piles of tires, while startled workers fled for exits. The interior of the plant, a three-story brick building of circular design, was destroyed.

Even after hose lines were amassed on every side of the building the intensity of the fire increased. Millions of gallons of water from towers and deck guns were poured on the stacks of tires for hours with little effect. The intense heat and the choking smoke forced the fire-fighters to drop their lines frequently and retreat from fire escapes and ladders.

One fireman, Jeremiah Devine of ladder 4, was cut on both hands by flying glass. After treatment by surgeons on the City Hospital ambulance he returned to his company.

STIFFEST BATTLE

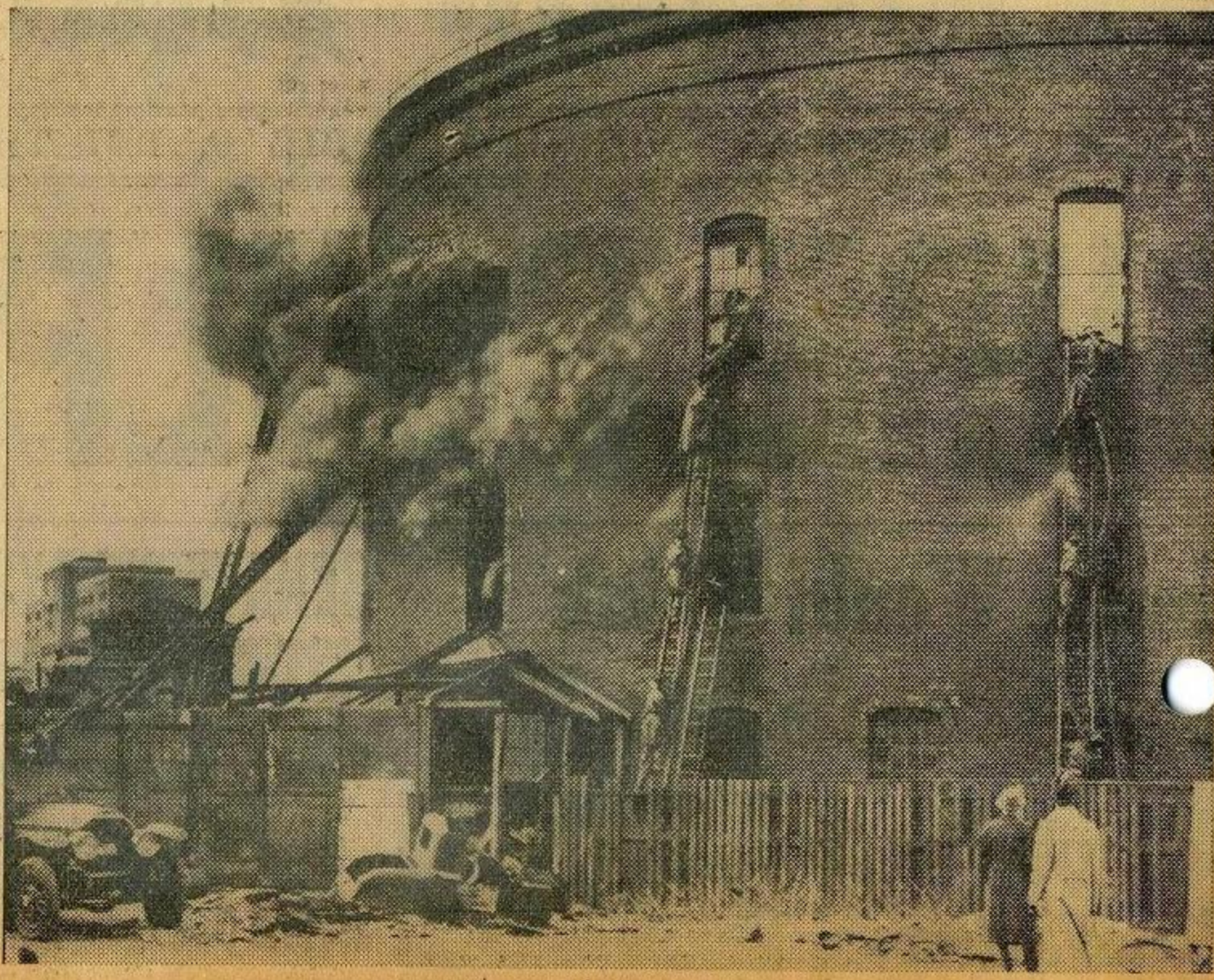
Chief Pope said the fire was the stiffest battle members of the department had had in recent years. That scores of firemen were not overcome was undoubtedly due to the fact that at 6 P. M., men on the night platoon relieved those who had been working during the day. Many firemen suffered attacks of nausea from inhalation of smoke, but remained on duty.

The Harvey plant is at Massachusetts avenue and Southampton street, directly across from a gigantic gasometer of the Boston Consolidated Gas Company and from the coal and oil yards of the Burton-Furber Coal Company. The entire district was menaced for a time, but firemen kept the flames in the Harvey building, which is entirely of brick, by water curtains.

With a report heard four blocks away, the cement and gasoline mixture on a work bench on the second floor exploded. Although knocked off his feet, Frank Chimi of 19 Greenwich street, Dorchester, the nearest workman to the bench, was not injured and was able to escape to the street.

BOSTON GLOBE—TUESDAY, APRIL 6, 1937

FIGHTING \$20,000 ROXBURY FIRE



FIREMEN GIVEN STIFF BATTLE AT "ROUND HOUSE"

JUMPS TO ROOF

Robert Consolo of 430 Hanover street, North end, was in a room adjoining the workshop, jumped from the second floor to the roof of a small brick building adjoining the plant and made his way to the ground along a drain pipe. His escape from the burning building had been cut off in all other directions.

More than 20,000 used tires had been delivered to the plant last week for retreading, according to the owner, Harvey Bauxman. In addition he had received delivery of \$15,000 worth of new rubber.

The first floor of the building is occupied by Heminway Brothers, truckmen. This firm suffered a loss of a large quantity of merchandise which was to be loaded on trucks for delivery last night.



ROXBURY LANDMARK BURNING IN THREE-ALARM FIRE

The plant of the Harvey Tire Company at Massachusetts avenue and Gerard street in Roxbury is shown burning yesterday. Smoke drifted through the whole district. City Hospital is near by.



BATTLING SMOKE BLAZE IN ROXBURY FIRE

Dense clouds of smoke poured out of the Harvey Tire and Rubber Company factory, as shown above, covering the entire section. Notice the firemen on the fire escape of the structure, nearly enveloped in smoke. The building in the background is the City Hospital, which was permeated with the acrid fumes of burning rubber.