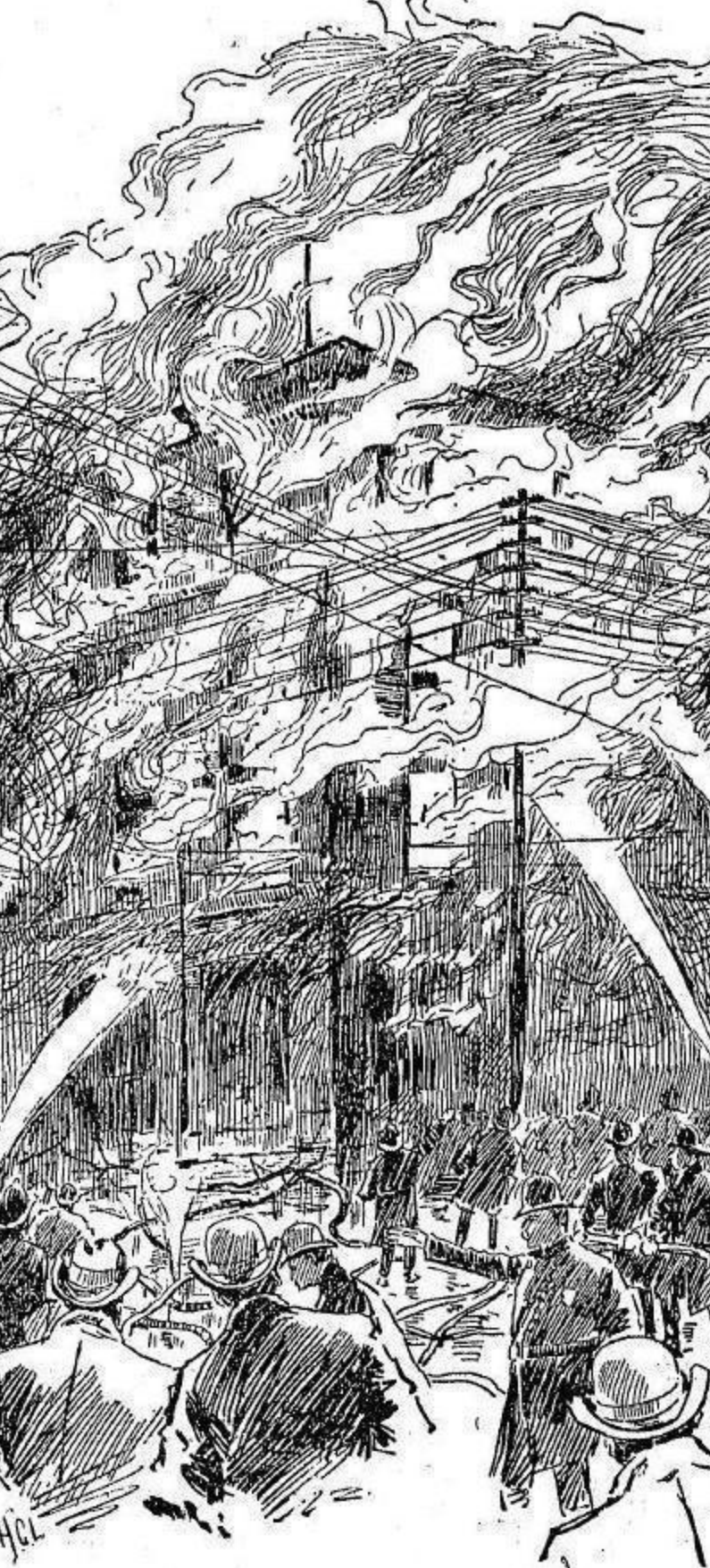


## FIRE LOSS, \$275,000

### Blaze in the Pope Co's Building Caused Big Scare in South End.



WHEN THE FIRE WAS AT ITS HEIGHT.  
SEEN FROM THE COLUMBUS AVENUE.

The magnificent five-story brick building occupied by the Pope Co's Building, a large manufacturing company on Columbus avenue, was tonight a furnace full of flames in the early afternoon.

Nothing but the bare walls were left standing.

The contents, including hundreds of bicycles ready for the market, and scores more kept in store for individual sale, were completely destroyed. Only a few bicycles were saved.

These in complete at the riding school, where the Pope Co's Building was located, and some of the employees left the second floor by means of ladders raised from the street.

The great structure occupied by the Pope Co's Building, to the north, and valued at hundreds of thousands of dollars, was threatened, but was saved by the excellent work of the fire department.

The flames early broke from the windows of the Pope Co's Building, and shot across the avenue, frightened the tenants of the Hoffman house and the second floor, and caused a great panic.

The fire was fought for several hours, and was kept within the walls of the Pope Co's Building.

An alarm from box 66 was rung at 11:10 a. m., but that was not the alarm in the Pope Co's Building, on Berkeley street. At 11:15 a. m. the alarm was rung in the Pope Co's Building, yet it had nothing to do with it.

Pope's alarm, No. 288, sounded at 11:15 a. m.

1:35. That meant business. It was followed by box 66, acting as a third alarm, at 1:40, and at 1:45 came the starting general alarm, which summoned all the available apparatus in the city.

The crowds blocked the streets, and the electric cars were stopped.

The fire originated in the basement of the Pope Co's Building, and spread upward through all the floors, and out through the windows with awful rapidity. There was no time to save anything except life, although the bookkeeper did carry to the books in the safe and turn the book, his clothing he left behind him.

At 1:50 the flood of water had cut down the flames, but a few cones of fire were still looking the flames away up through the roof and the top of the building.

The Pope Co's Building is situated on the corner of Columbus avenue and Berkeley street. The contents of the building are estimated at \$275,000, including bicycles, bicycle equipment, furniture, etc. The insurance on this stock is \$275,000.

The Pope Co's Building is situated on the corner of Columbus avenue and Berkeley street. The contents of the building are estimated at \$275,000, including bicycles, bicycle equipment, furniture, etc. The insurance on this stock is \$275,000.

Starting in the Basement the Fire Went Quickly From Floor to Floor, Destroying Almost Everything.

The flames spread with remarkable rapidity, running from the basement through all parts of the building to the roof in a very short time.

John Costello, manager of the second floor, when the department first reached the fire, and it is owing to his prompt and efficient work that the loss was not as great as it might have been.

Mr. Costello was at work in the second floor room on the street floor, which occupied the large space on the north side of the building. He was in the room when the fire broke out, and he saw the flames coming from the basement.

He saw the flames coming from the basement, and he saw the flames coming from the basement.

ing fire for some time after it was known in the room above.

No one noticed them, and they were only aroused to the situation when their room was suddenly filled with dense smoke.

One man made a move to escape, and they all waited until the stairs as an exit was reached to them. All made an attempt to reach it and gain the floor above, but the draft was sweeping the smoke toward the front of the building, and it was too much for them.

The fire burned in the windows, and these had been closed so long that the heat was so intense that the windows were shattered.

Some of the men, however, were able to get out of the building, and they were all saved.

The fire burned in the windows, and these had been closed so long that the heat was so intense that the windows were shattered.

Best Chew. Best Smoke.  
Best Chew. Best Smoke.  
Best Chew. Best Smoke.

BLUE LABEL  
B. L. TOBACCO  
EVERY TAG.

Best Chew. Best Smoke.  
Best Chew. Best Smoke.  
Best Chew. Best Smoke.

CHAPTER IV.  
HOBSON'S CRUSOE WHEEL

It is up to DATE.  
Large TATTOO.  
Weight 214 lbs.  
Fully Guaranteed.  
1896 Model.

Terms: \$10.00 DOWN.  
\$2.00 A WEEK.

Terms: \$15.00 DOWN.  
\$2.50 A WEEK.

C. H. HOBSON & CO.  
138-142 Washington Street, BOSTON.  
Kindly call on us for our new and improved Hobson's Crusoe Wheel.

SPREAD OF THE FLAMES.

The flames spread with remarkable rapidity, running from the basement through all parts of the building to the roof in a very short time.

John Costello, manager of the second floor, when the department first reached the fire, and it is owing to his prompt and efficient work that the loss was not as great as it might have been.

Mr. Costello was at work in the second floor room on the street floor, which occupied the large space on the north side of the building. He was in the room when the fire broke out, and he saw the flames coming from the basement.

Take Hood's Sarsaparilla

Loose Muscatel Raisins, 2 1/2 C. Lb.

Dr. Mearns' Sarsaparilla, 2 1/2 C. Lb.

Dr. Mearns' Sarsaparilla, 2 1/2 C. Lb.

Dr. Mearns' Sarsaparilla, 2 1/2 C. Lb.

Best Chew. Best Smoke.  
Best Chew. Best Smoke.  
Best Chew. Best Smoke.

BLUE LABEL  
B. L. TOBACCO  
EVERY TAG.

Best Chew. Best Smoke.  
Best Chew. Best Smoke.  
Best Chew. Best Smoke.

CHAPTER IV.  
HOBSON'S CRUSOE WHEEL

It is up to DATE.  
Large TATTOO.  
Weight 214 lbs.  
Fully Guaranteed.  
1896 Model.

Terms: \$10.00 DOWN.  
\$2.00 A WEEK.

Terms: \$15.00 DOWN.  
\$2.50 A WEEK.

C. H. HOBSON & CO.  
138-142 Washington Street, BOSTON.  
Kindly call on us for our new and improved Hobson's Crusoe Wheel.

SPREAD OF THE FLAMES.

The flames spread with remarkable rapidity, running from the basement through all parts of the building to the roof in a very short time.

John Costello, manager of the second floor, when the department first reached the fire, and it is owing to his prompt and efficient work that the loss was not as great as it might have been.

Mr. Costello was at work in the second floor room on the street floor, which occupied the large space on the north side of the building. He was in the room when the fire broke out, and he saw the flames coming from the basement.

Take Hood's Sarsaparilla

Loose Muscatel Raisins, 2 1/2 C. Lb.

Dr. Mearns' Sarsaparilla, 2 1/2 C. Lb.

Dr. Mearns' Sarsaparilla, 2 1/2 C. Lb.

Dr. Mearns' Sarsaparilla, 2 1/2 C. Lb.

Best Chew. Best Smoke.  
Best Chew. Best Smoke.  
Best Chew. Best Smoke.

BLUE LABEL  
B. L. TOBACCO  
EVERY TAG.

Best Chew. Best Smoke.  
Best Chew. Best Smoke.  
Best Chew. Best Smoke.

CHAPTER IV.  
HOBSON'S CRUSOE WHEEL

It is up to DATE.  
Large TATTOO.  
Weight 214 lbs.  
Fully Guaranteed.  
1896 Model.

Terms: \$10.00 DOWN.  
\$2.00 A WEEK.

Terms: \$15.00 DOWN.  
\$2.50 A WEEK.

C. H. HOBSON & CO.  
138-142 Washington Street, BOSTON.  
Kindly call on us for our new and improved Hobson's Crusoe Wheel.

SPREAD OF THE FLAMES.

The flames spread with remarkable rapidity, running from the basement through all parts of the building to the roof in a very short time.

John Costello, manager of the second floor, when the department first reached the fire, and it is owing to his prompt and efficient work that the loss was not as great as it might have been.

Mr. Costello was at work in the second floor room on the street floor, which occupied the large space on the north side of the building. He was in the room when the fire broke out, and he saw the flames coming from the basement.

Take Hood's Sarsaparilla

Loose Muscatel Raisins, 2 1/2 C. Lb.

Dr. Mearns' Sarsaparilla, 2 1/2 C. Lb.

Dr. Mearns' Sarsaparilla, 2 1/2 C. Lb.

Dr. Mearns' Sarsaparilla, 2 1/2 C. Lb.

JORDAN, MARSH & CO.  
DRESS GOODS

Street Floor.



Fancy Novelties

We have purchased outright from a large American manufacturer, at a remarkably low figure, his entire stock of 36-inch Novelties. They are this season's goods and have been rapid sellers at 50c a yard. Our price is only

29c.

SILK SKIRTS

We are showing an unusually large assortment of Silk Skirts, including many Paris novelties of our own importation.

As special inducement we offer special prices on the following: Taffeta, silk and satin, tulle, lace, and all the latest styles. Prices from 25c to 50c a yard.

\$4.98.

Boston Daily Globe.

FRIDAY, MARCH 13, 1896.

MINIATURE ALMANAC, March 13.

Standard Time.

Boston, March 13, 1896. 7:40 a. m. Sun Sets 6:40 p. m. Moon Sets 11:20 p. m. Moon Rises 5:20 a. m.

Moons' Changes.

New Moon, March 13, 6:40 a. m. morning. 1st Quarter, March 15, 11:20 a. m. morning. Full Moon, March 17, 11:20 a. m. morning. Last Quarter, March 19, 11:20 a. m. morning.

THE EARLIEST PART OF IT.

managed to get all of this valuable property into the safe and closed both doors.

When they had done this it was about 1:30 a. m. The fire was still burning, and the flames were still coming from the basement.

The fire was still burning, and the flames were still coming from the basement.

When they had done this it was about 1:30 a. m. The fire was still burning, and the flames were still coming from the basement.

The fire was still burning, and the flames were still coming from the basement.

When they had done this it was about 1:30 a. m. The fire was still burning, and the flames were still coming from the basement.

The fire was still burning, and the flames were still coming from the basement.

When they had done this it was about 1:30 a. m. The fire was still burning, and the flames were still coming from the basement.

The fire was still burning, and the flames were still coming from the basement.

When they had done this it was about 1:30 a. m. The fire was still burning, and the flames were still coming from the basement.

The fire was still burning, and the flames were still coming from the basement.

When they had done this it was about 1:30 a. m. The fire was still burning, and the flames were still coming from the basement.

The fire was still burning, and the flames were still coming from the basement.

When they had done this it was about 1:30 a. m. The fire was still burning, and the flames were still coming from the basement.

The fire was still burning, and the flames were still coming from the basement.

When they had done this it was about 1:30 a. m. The fire was still burning, and the flames were still coming from the basement.

The fire was still burning, and the flames were still coming from the basement.

When they had done this it was about 1:30 a. m. The fire was still burning, and the flames were still coming from the basement.

The fire was still burning, and the flames were still coming from the basement.

When they had done this it was about 1:30 a. m. The fire was still burning, and the flames were still coming from the basement.

The fire was still burning, and the flames were still coming from the basement.

When they had done this it was about 1:30 a. m. The fire was still burning, and the flames were still coming from the basement.

The fire was still burning, and the flames were still coming from the basement.

When they had done this it was about 1:30 a. m. The fire was still burning, and the flames were still coming from the basement.

The fire was still burning, and the flames were still coming from the basement.

When they had done this it was about 1:30 a. m. The fire was still burning, and the flames were still coming from the basement.

The fire was still burning, and the flames were still coming from the basement.

When they had done this it was about 1:30 a. m. The fire was still burning, and the flames were still coming from the basement.

The fire was still burning, and the flames were still coming from the basement.

When they had done this it was about 1:30 a. m. The fire was still burning, and the flames were still coming from the basement.

The fire was still burning, and the flames were still coming from the basement.

When they had done this it was about 1:30 a. m. The fire was still burning, and the flames were still coming from the basement.

The fire was still burning, and the flames were still coming from the basement.

When they had done this it was about 1:30 a. m. The fire was still burning, and the flames were still coming from the basement.

The fire was still burning, and the flames were still coming from the basement.

A Big Wash Looks Discouraging.

But when you have the right soap to attack the great stack of soiled clothes with, the battle is half won.

Sunlight Soap

In the weapon to use. It will save you time and money. It will save you time and money. It will save you time and money.

Sunlight Soap

In the weapon to use. It will save you time and money. It will save you time and money. It will save you time and money.

Sunlight Soap

In the weapon to use. It will save you time and money. It will save you time and money. It will save you time and money.

Sunlight Soap

In the weapon to use. It will save you time and money. It will save you time and money. It will save you time and money.

Sunlight Soap

In the weapon to use. It will save you time and money. It will save you time and money. It will save you time and money.

Sunlight Soap

In the weapon to use. It will save you time and money. It will save you time and money. It will save you time and money.

Sunlight Soap

In the weapon to use. It will save you time and money. It will save you time and money. It will save you time and money.

Sunlight Soap

In the weapon to use. It will save you time and money. It will save you time and money. It will save you time and money.

Sunlight Soap

In the weapon to use. It will save you time and money. It will save you time and money. It will save you time and money.

Sunlight Soap

In the weapon to use. It will save you time and money. It will save you time and money. It will save you time and money.

Sunlight Soap

In the weapon to use. It will save you time and money. It will save you time and money. It will save you time and money.

Sunlight Soap

In the weapon to use. It will save you time and money. It will save you time and money. It will save you time and money.

Sunlight Soap

In the weapon to use. It will save you time and money. It will save you time and money. It will save you time and money.

Sunlight Soap

In the weapon to use. It will save you time and money. It will save you time and money. It will save you time and money.

Sunlight Soap

In the weapon to use. It will save you time and money. It will save you time and money. It will save you time and money.

Sunlight Soap

In the weapon to use. It will save you time and money. It will save you time and money. It will save you time and money.

Sunlight Soap

In the weapon to use. It will save you time and money. It will save you time and money. It will save you time and money.

Sunlight Soap

In the weapon to use. It will save you time and money. It will save you time and money. It will save you time and money.

Sunlight Soap

In the weapon to use. It will save you time and money. It will save you time and money. It will save you time and money.

Sunlight Soap

In the weapon to use. It will save you time and money. It will save you time and money. It will save you time and money.

Sunlight Soap

In the weapon to use. It will save you time and money. It will save you time and money. It will save you time and money.

Sunlight Soap

In the weapon to use. It will save you time and money. It will save you time and money. It will save you time and money.

Sunlight Soap

In the weapon to use. It will save you time and money. It will save you time and money. It will save you time and money.

Sunlight Soap

In the weapon to use. It will save you time and money. It will save you time and money. It will save you time and money.

Sunlight Soap

In the weapon to use. It will save you time and money. It will save you time and money. It will save you time and money.

burning wood was in the elevator well every floor of the building.

The fire was still burning, and the flames were still coming from the basement.

burning wood was in the elevator well every floor of the building.

The fire was still burning, and the flames were still coming from the basement.

burning wood was in the elevator well every floor of the building.

The fire was still burning, and the flames were still coming from the basement.

burning wood was in the elevator well every floor of the building.

The fire was still burning, and the flames were still coming from the basement.

burning wood was in the elevator well every floor of the building.

The fire was still burning, and the flames were still coming from the basement.

burning wood was in the elevator well every floor of the building.

The fire was still burning, and the flames were still coming from the basement.

burning wood was in the elevator well every floor of the building.

The fire was still burning, and the flames were still coming from the basement.

burning wood was in the elevator well every floor of the building.

The fire was still burning, and the flames were still coming from the basement.

burning wood was in the elevator well every floor of the building.

The fire was still burning, and the flames were still coming from the basement.

burning wood was in the elevator well every floor of the building.

The fire was still burning, and the flames were still coming from the basement.

burning wood was in the elevator well every floor of the building.

The fire was still burning, and the flames were still coming from the basement.

burning wood was in the elevator well every floor of the building.

The fire was still burning, and the flames were still coming from the basement.

burning wood was in the elevator well every floor of the building.

The fire was still burning, and the flames were still coming from the basement.

burning wood was in the elevator well every floor of the building.

The fire was still burning, and the flames were still coming from the basement.

burning wood was in the elevator well every floor of the building.

The fire was still burning, and the flames were still coming from the basement.

burning wood was in the elevator well every floor of the building.

The fire was still burning, and the flames were still coming from the basement.

burning wood was in the elevator well every floor of the building.

The fire was still burning, and the flames were still coming from the basement.

burning wood was in the elevator well every floor of the building.

The fire was still burning, and the flames were still coming from the basement.

burning wood was in the elevator well every floor of the building.

The fire was still burning, and the flames were still coming from the basement.

burning wood was in the elevator well every floor of the building.

The fire was still burning, and the flames were still coming from the basement.

burning wood was in the elevator well every floor of the building.

The fire was still burning, and the flames were still coming from the basement.

burning wood was in the elevator well every floor of the building.

The fire was still burning, and the flames were still coming from the basement.

burning wood was in the elevator well every floor of the building.

The fire was still burning, and the flames were still coming from the basement.

burning wood was in the elevator well every floor of the building.

The fire was still burning, and the flames were still coming from the basement.

burning wood was in the elevator well every floor of the building.

The fire was still burning, and the flames were still coming from the basement.

burning wood was in the elevator well every floor of the building.

The fire was still burning, and the flames were still coming from the basement.

STANHOPE ST VIEW OF THE FIRE, FROM A PHOTOGRAPH.



STANHOPE ST VIEW OF THE FIRE, FROM A PHOTOGRAPH.

STANHOPE ST VIEW OF THE FIRE, FROM A PHOTOGRAPH.

STANHOPE ST VIEW OF THE FIRE, FROM A PHOTOGRAPH.

STANHOPE ST VIEW OF THE FIRE, FROM A PHOTOGRAPH.

STANHOPE ST VIEW OF THE FIRE, FROM A PHOTOGRAPH.

STANHOPE ST VIEW OF THE FIRE, FROM A PHOTOGRAPH.

STANHOPE ST VIEW OF THE FIRE, FROM A PHOTOGRAPH.

STANHOPE ST VIEW OF THE FIRE, FROM A PHOTOGRAPH.

STANHOPE ST VIEW OF THE FIRE, FROM A PHOTOGRAPH.

STANHOPE ST VIEW OF THE FIRE, FROM A PHOTOGRAPH.

STANHOPE ST VIEW OF THE FIRE, FROM A PHOTOGRAPH.

STANHOPE ST VIEW OF THE FIRE, FROM A PHOTOGRAPH.

STANHOPE ST VIEW OF THE FIRE, FROM A PHOTOGRAPH.

STANHOPE ST VIEW OF THE FIRE, FROM A PHOTOGRAPH.

STANHOPE ST VIEW OF THE FIRE, FROM A PHOTOGRAPH.

STANHOPE ST VIEW OF THE FIRE, FROM A PHOTOGRAPH.

STANHOPE ST VIEW OF THE FIRE, FROM A PHOTOGRAPH.

STANHOPE ST VIEW OF THE FIRE, FROM A PHOTOGRAPH.

THE BOSTON DAILY GLOBE—FRIDAY, MARCH 13, 1896.



STANHOPE ST VIEW OF THE FIRE, FROM A PHOTOGRAPH.

STANHOPE ST VIEW OF THE FIRE, FROM A PHOTOGRAPH.

STANHOPE ST VIEW OF THE FIRE, FROM A PHOTOGRAPH.

STANHOPE ST VIEW OF THE FIRE, FROM A PHOTOGRAPH.

STANHOPE ST VIEW OF THE FIRE, FROM A PHOTOGRAPH.

STANHOPE ST VIEW OF THE FIRE, FROM A PHOTOGRAPH.

STANHOPE ST VIEW OF THE FIRE, FROM A PHOTOGRAPH.

STANHOPE ST VIEW OF THE FIRE, FROM A PHOTOGRAPH.

STANHOPE ST VIEW OF THE FIRE, FROM A PHOTOGRAPH.

STANHOPE ST VIEW OF THE FIRE, FROM A PHOTOGRAPH.

STANHOPE ST VIEW OF THE FIRE, FROM A PHOTOGRAPH.

STANHOPE ST VIEW OF THE FIRE, FROM A PHOTOGRAPH.

STANHOPE ST VIEW OF THE FIRE, FROM A PHOTOGRAPH.

STANHOPE ST VIEW OF THE FIRE, FROM A PHOTOGRAPH.

STANHOPE ST VIEW OF THE FIRE, FROM A PHOTOGRAPH.

STANHOPE ST VIEW OF THE FIRE, FROM A PHOTOGRAPH.

STANHOPE ST VIEW OF THE FIRE, FROM A PHOTOGRAPH.

STANHOPE ST VIEW OF THE FIRE, FROM A PHOTOGRAPH.

THE BOSTON DAILY GLOBE—FRIDAY, MARCH 13, 1896.



STANHOPE ST VIEW OF THE FIRE, FROM A PHOTOGRAPH.

STANHOPE ST VIEW OF THE FIRE, FROM A PHOTOGRAPH.

STANHOPE ST VIEW OF THE FIRE, FROM A PHOTOGRAPH.

STANHOPE ST VIEW OF THE FIRE, FROM A PHOTOGRAPH.

STANHOPE ST VIEW OF THE FIRE, FROM A PHOTOGRAPH.

STANHOPE ST VIEW OF THE FIRE, FROM A PHOTOGRAPH.

STANHOPE ST VIEW OF THE FIRE, FROM A PHOTOGRAPH.

STANHOPE ST VIEW OF THE FIRE, FROM A PHOTOGRAPH.

STANHOPE ST VIEW OF THE FIRE, FROM A PHOTOGRAPH.

STANHOPE ST VIEW OF THE FIRE, FROM A PHOTOGRAPH.

STANHOPE ST VIEW OF THE FIRE, FROM A PHOTOGRAPH.

STANHOPE ST VIEW OF THE FIRE, FROM A PHOTOGRAPH.

STANHOPE ST VIEW OF THE FIRE, FROM A PHOTOGRAPH.

STANHOPE ST VIEW OF THE FIRE, FROM A PHOTOGRAPH.

STANHOPE ST VIEW OF THE FIRE, FROM A PHOTOGRAPH.

STANHOPE ST VIEW OF THE FIRE, FROM A PHOTOGRAPH.

STANHOPE ST VIEW OF THE FIRE, FROM A PHOTOGRAPH.

STANHOPE ST VIEW OF THE FIRE, FROM A PHOTOGRAPH.