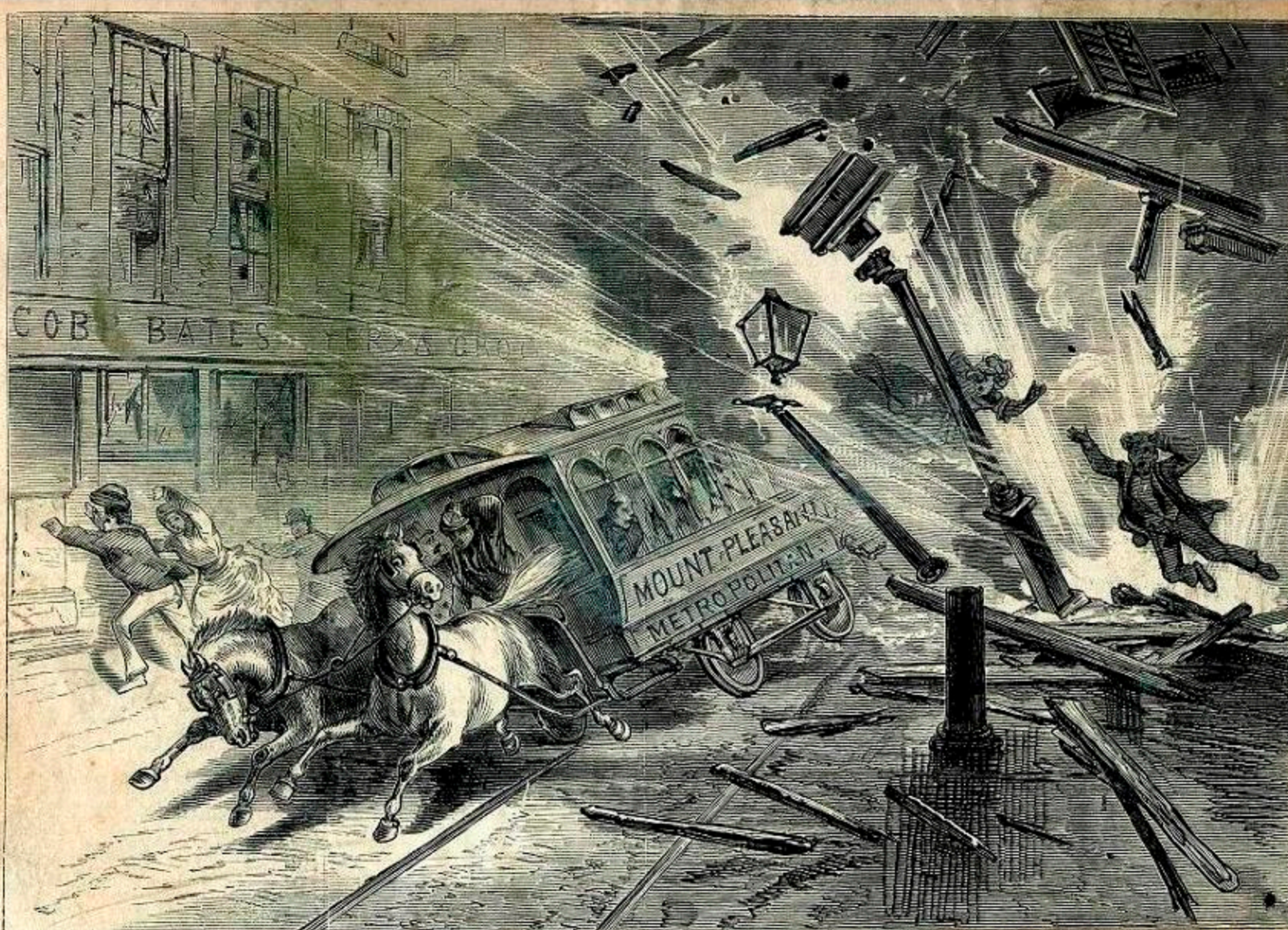




Scene after the terrible Explosion, cor. of Washington and Lagrange Streets, on May 26, 1875.

Courtesy: Boston Public Library, via Flickr.com / Creative Commons 2.0



A STREET-CAR, FULL OF PASSENGERS, BLOWN FROM THE TRACK.—SKETCHED BY E. H. MORSE.

BOSTON, MASS.—THE DESTRUCTIVE EXPLOSION AT DOWS' DRUG-STORE, AT THE CORNER OF WASHINGTON AND LAGRANGE STREETS, MAY 26TH.