

ANDREW SQUARE ENGINE HOUSE is on the square of that name in Ward 15 (South Boston). It is planned for an Engine and Ladder House. The exterior brick

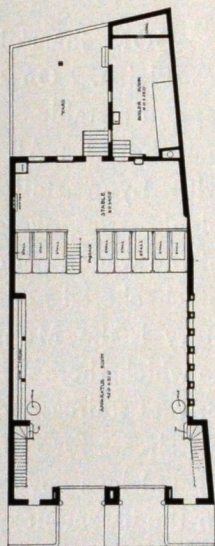
*Andrew Square Engine House.*

work is of selected red water struck brick, laid in white mortar, accentuated slightly with light buff terra cotta brick and with marble discs. The trimmings are of red terra cotta. Apparatus room and stable are lined with Scotch firebrick. The first story floor is of "Guastavino" tile construction. The second floor is a combination of steel truss and concrete also constructed by the Guastavino Company. This is the first engine house built for the City of Boston where a system of artificial ventilation was provided. The site of the building being

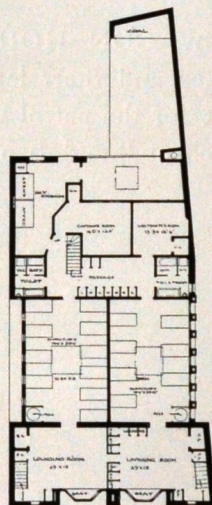


ANDREW SQUARE ENGINE HOUSE.

but a few feet above mean high water, the basement could not be utilized. The boiler room was therefore placed at the rear a few feet below the level of the first floor, and the hose cleaning trough and drying racks, usually placed in the basement, were here of necessity put on the first floor. The cost of this building was about \$26,000.00.



FIRST FLOOR PLAN.



SECOND FLOOR PLAN.